

NEW LISTING!

Marina del Rey 2nd Floor Creative Office Space Sublease



13375 Beach Avenue, Marina del Rey, CA 90292



Laura Pozarny, Executive Vice-President
(310) 458-4100 ext: 222
lpozarny@muselli.net
DRE License 02129230

Evan Pozarny, Executive Vice-President
310-458-4100 ext: 221
epozarny@muselli.net
DRE License 01304769

13375 Beach Avenue consists of a nicely improved 2,900 SF creative office space in a two-story building. It is located near the signalized intersection of Washington and Lincoln Boulevards and within walking distance of local restaurants and retailers.

The coastal community of Marina del Rey is located on the Westside between Venice Beach and Playa del Rey, 4 miles north of Los Angeles International Airport. Marina del Rey is considered one of the neighborhoods in “Silicon Beach”, which is home to more than 500 technology companies including startups on the Westside. Santa Monica is just a few miles north and Culver City is adjacent to the east.

Rental Rate Year 1: \$3.00/SF Modified Gross
Year 2: \$3.50/SF Modified Gross
Year 3: \$3.60/SF Modified Gross
Tenant pays for utilities and janitorial

Space Reception downstairs
4 large private offices
Large open area with built in workstations
Kitchenette
Server room with dedicated HVAC

Bathroom 2 Restrooms

Parking 4 single parking and 1 tandem space at no additional charge

Elevator None

Year Built 1972

Area Close to the Marina Collection, Marina Market Place, Villa Marina Shopping Center and Costco/ Albertsons Shopping Center.
Numerous Lofts, and Production Companies are in the immediate area.

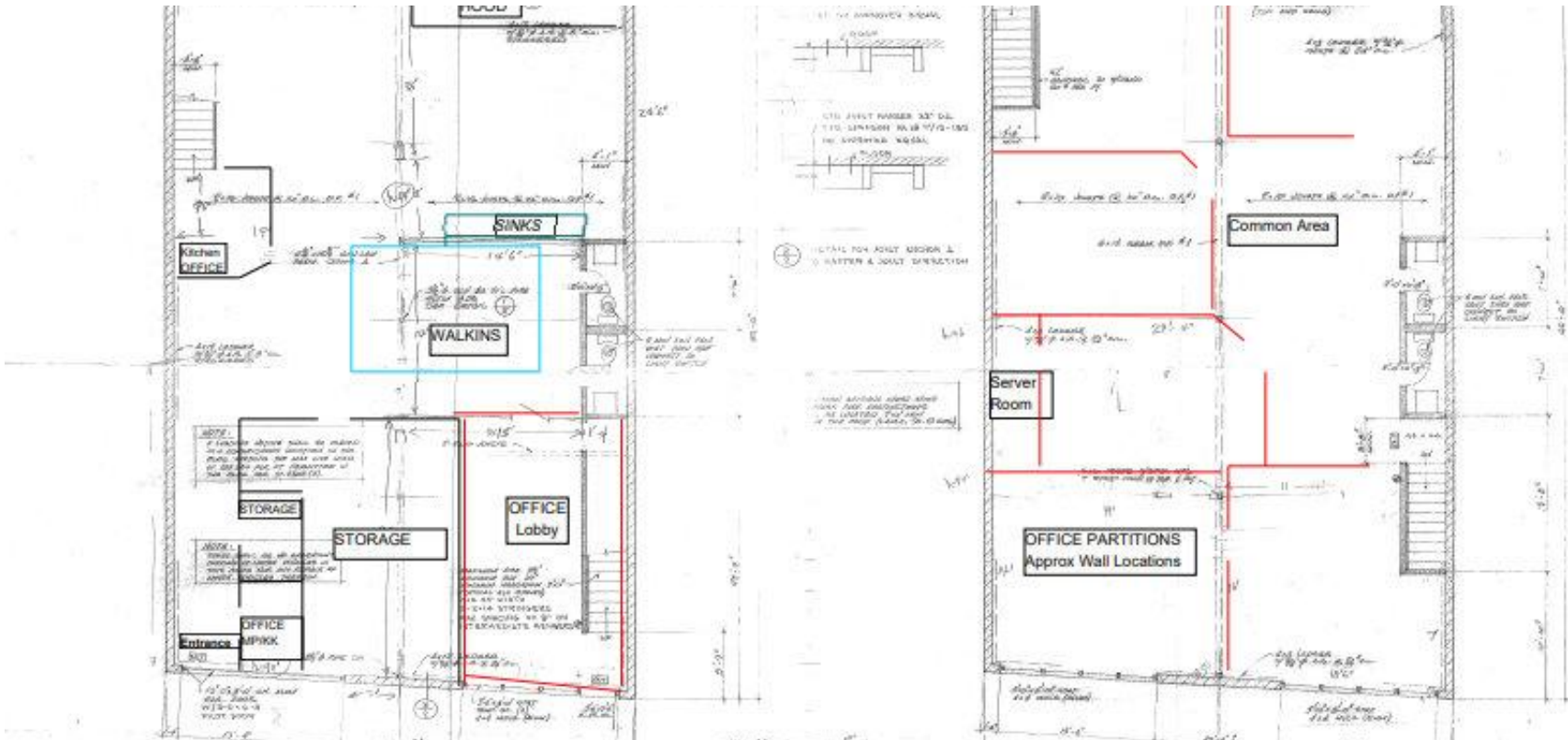
Tourism [Click here for information from the Marina del Rey Tourism Board.](#)



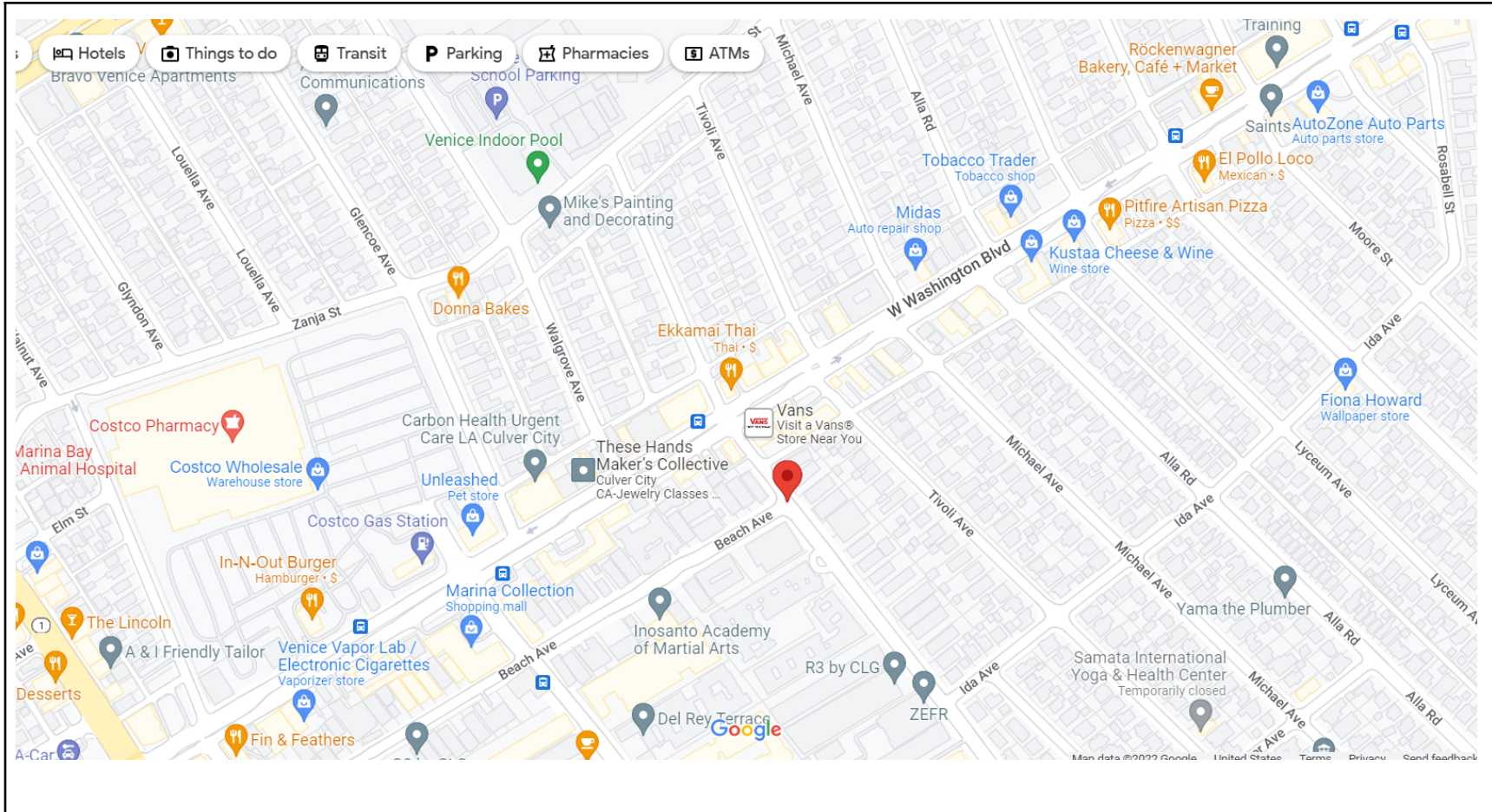
Interior Photos



Floor Plans



Map View



1513 6th Street, Suite 201 A • Santa Monica, CA 90401 • (310) 458-4100 • FAX (310) 458-4100 www.muselli.net
DRE BROKER # 00825237

All information furnished is from sources deemed reliable and which we believe to be correct, but representation or guarantee is given as to its accuracy and is subject to errors and omissions. All measurements are approximate and have not been verified by the Broker. You are advised to conduct an independent investigation to verify all information.