

NEW LISTING!

Corner Retail/Medical Space at Santa Monica & Centinela / Santa Monica, CA



3200 Santa Monica Boulevard Unit 100, Santa Monica, CA 90404



Laura Pozarny, Executive Vice-President
(310) 458-4100 ext: 222
lpozarny@muselli.net
DRE License 02129230

Evan Pozarny, Executive Vice-President
310-458-4100 ext: 221
epozarny@muselli.net
DRE License 01304769

Prime Santa Monica retail/medical location just West of Centinela. Great central Santa Monica location with easy access to West Los Angeles, Brentwood, Mar Vista, Culver City, Venice, and Marina Del Rey. Retail, restaurants, fast food, and services are within walking distance.

Lease Rate \$3.50 per SF per month plus NNN charges of approximately \$0.30 per SF per month.

Term 3 - 5 Year Term. *Available Immediately.*

Highlights Approximately 3,000 SF.
Previously occupied by The Activity Center
Excellent building signage
Corner location
2 large open areas
Large Kitchen
Art room with commercial sink
Storage room
Approximately \$600.00/month for water, electricity, trash and sewer

Bathroom 2 Multi stall ADA bathrooms

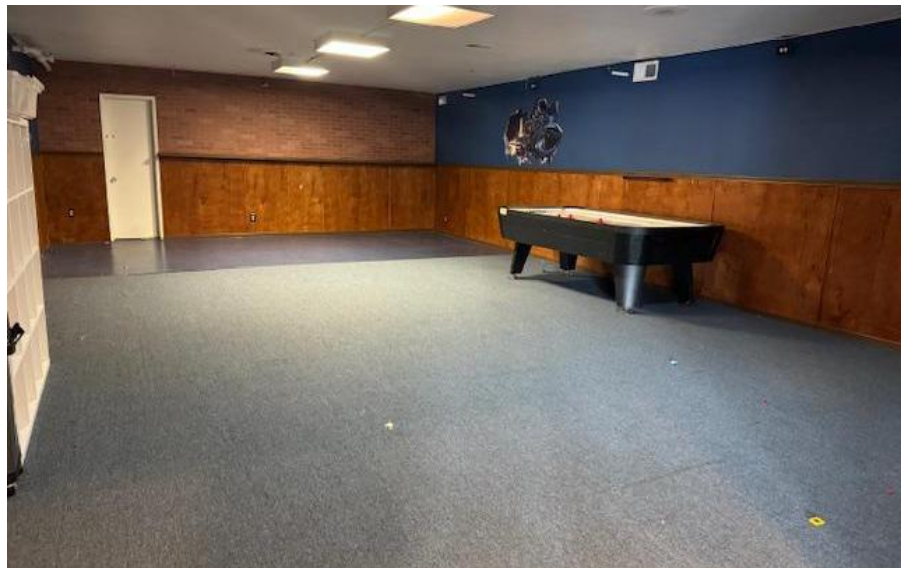
Parking Fenced in outdoor area that can accommodate up to 12 cars for an additional \$1,200 per month. Or can be used for outdoor childrens space.

Area Prime Santa Monica blvd location with easy access to the 10 Freeway, West Los Angeles, Brentwood, Mar Vista, Culver City, Venice & Marina Del Rey.

Demographics
3 Mile Radius Population is 218,000.
Households are 109,000.
Median household income is \$105,000.00.
Median age is 43.50 years.
Daytime employees are 51,000.



Photos and Map View





1513 6th Street, Suite 201 A • Santa Monica, CA 90401 • (310) 458-4100 • FAX (310) 458-4100 www.muselli.net

DRE BROKER # 00825237

All information furnished is from sources deemed reliable and which we believe to be correct, but representation or guarantee is given as to its accuracy and is subject to errors and omissions. All measurements are approximate and have not been verified by the Broker. You are advised to conduct an independent investigation to verify all information.