

**Small Offices For Lease**  
**Newly Renovated in Downtown Santa Monica**



**1513 6th Street, Santa Monica, CA 90401**



**Laura Pozarny, Executive Vice-President**  
**(310) 458-4100 ext: 222**  
[lpozarny@muselli.net](mailto:lpozarny@muselli.net)  
**DRE License 02129230**

**Evan Pozarny, Executive Vice-President**  
**(310) 458-4100 ext: 221**  
[epozarny@muselli.net](mailto:epozarny@muselli.net)  
**DRE License 01304769**



## 1513 6th Street, Santa Monica, CA 90401

**Newly renovated!** Bright and modern multi-room office suites available and move-in ready in a charming 2-story building in the heart of downtown Santa Monica. This Mediterranean-style building offers a shared courtyard for a friendly and productive working environment. A Private Entrance off the Courtyard makes it ideal for Social Distancing.

### Available Suites

**Suite 201:** 500 SF | \$3,650.00 per month  
Full Service Gross. 4 room suite with sink.  
2nd Floor

**Suite 202a:** 300 SF | \$1,850.00 per month  
Full Service Gross. 3-room suite with  
storage area and sink.

### Highlights

- Hardwood floors.
- Operable windows.
- Heating and Air Conditioning.
- Onsite management.
- No elevator
- Full-Service Gross. Lessor pays for electricity and janitorial.

### Area

- Great central Downtown Santa Monica location.
- Retail, restaurants, fast food, and services within walking distance.
- Walk or bike to Third Street Promenade, Santa Monica Place Mall, Santa Monica Pier, Palisades Park, and Beaches.

### Parking

1 parking space is available at \$175 per month.

### Bathrooms

Separate Men's and Women's Bathrooms on both floors.

### Transportation

- Metro Rail Station within two blocks.
- Santa Monica Bus Station and bus stop within one block.

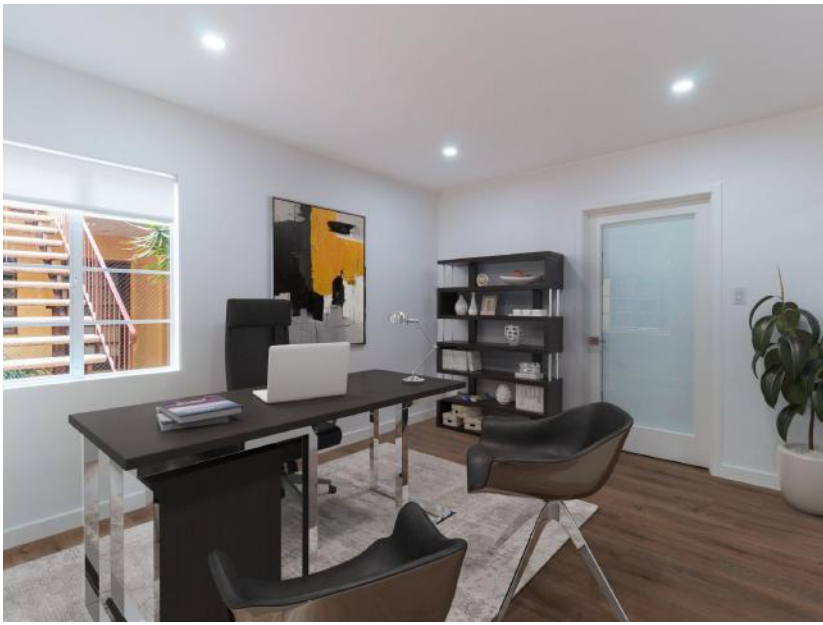
### Demographics

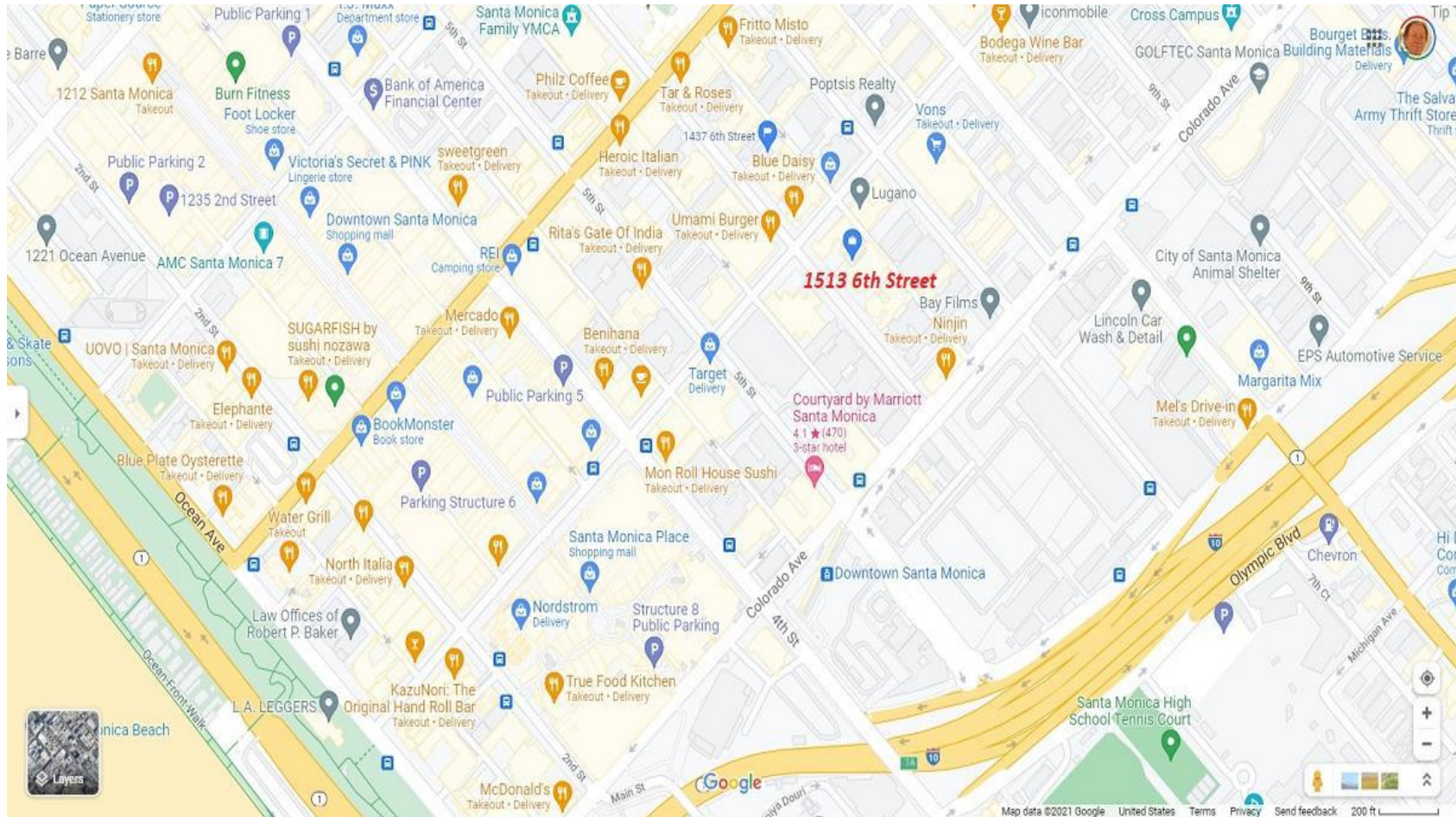
#### 3 Mile Radius & Traffic Count

- \$98,000 median household income.
- 231,403 households.
- 143,591 daytime employees.
- The average age is 40.









**1513 6<sup>th</sup> Street, Suite 201 A • Santa Monica, CA 90401 • (310) 458-4100 • FAX (310) 458-4100**  
**DRE BROKER # 00825237**  
[www.muselli.net](http://www.muselli.net)

All information furnished is from sources deemed reliable and which we believe to be correct, but no representation or guarantee is given as to its accuracy and is subject to errors and omissions. All measurements are approximate and have not been verified by the Broker. You are advised to conduct an independent investigation to verify all information and check with the local zoning authority to verify that your intended use is allowed.