

RATE REDUCTION!

Small Office Space On Wilshire / Santa Monica



2116 Wilshire Boulevard Unit 270, Santa Monica, CA 90403

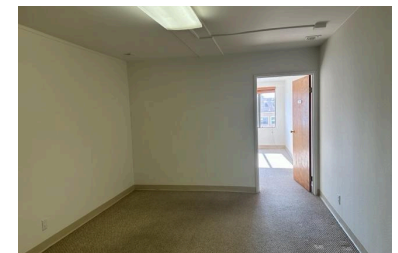


Laura Pozarny, Executive Vice-President
(310) 458-4100 ext: 222
lpozarny@muselli.net
DRE License 02129230

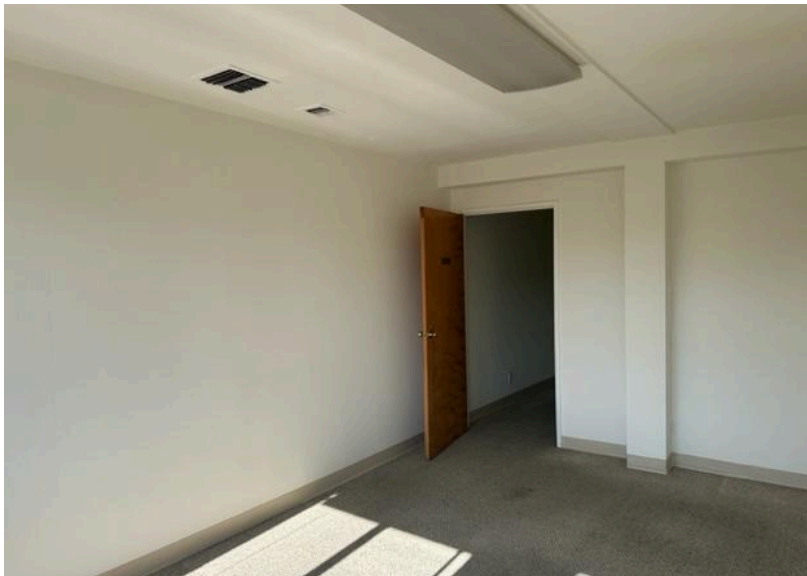
Evan Pozarny, Executive Vice-President
310-458-4100 ext: 221
epozarny@muselli.net
DRE License 01304769

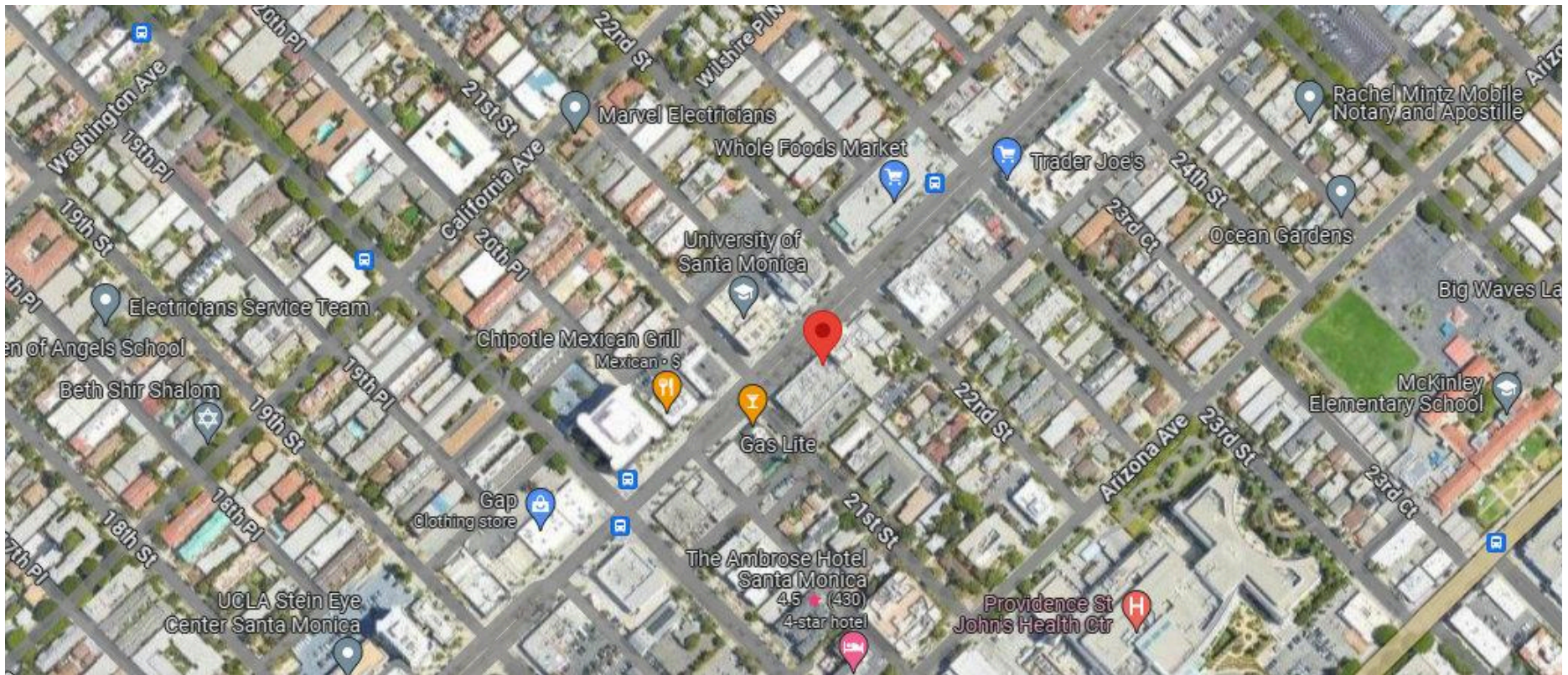
Small Office space centrally located at Wilshire and 21st street in Santa Monica..

- Lease Rate** ~~\$2,000.00~~ \$ per month Modified Gross. Tenant pays their own interior janitorial.
- Term** 3 years.
- Highlights** Approximately 775 Square Feet.
2 room office overlooking Wilshire Blvd
- Bathroom** Shared men's and women's restrooms.
- Parking** 1 reserved parking spot available for \$175 per month. Shared customer parking lot available at **no extra charge.**
- Area**
- Easy access to West LA, Brentwood, Downtown Santa Monica.
Across from Whole Foods and an abundance of local eateries and other amenities just steps away.
- Prime Santa Monica location with easy access to the 10 Freeway, West Los Angeles, Brentwood, Mar Vista, Culver City, Venice & Marina Del Rey.



Photos and Map View





1513 6th Street, Suite 201 A • Santa Monica, CA 90401 • (310) 458-4100 • FAX (310) 458-4100 www.muselli.net

DRE BROKER # 00825237

All information furnished is from sources deemed reliable and which we believe to be correct, but no representation or guarantee is given as to its accuracy and is subject to errors and omissions. All measurements are approximate and have not been verified by the Broker. You are advised to conduct an independent investigation to verify all information.