

Wilshire Blvd Office Spaces / Santa Monica



2116 Wilshire Boulevard, Santa Monica, CA 90403



Laura Pozarny, Executive Vice-President
(310) 458-4100 ext: 222
lpozarny@muselli.net
DRE License 02129230

Evan Pozarny, Executive Vice-President
310-458-4100 ext: 221
epozarny@muselli.net
DRE License 01304769

4 office suites available now! This property is centrally located at Wilshire and 21st street in Santa Monica.

Units

<u>Suite</u>	<u>Size and Price</u>	<u>Space Highlights</u>
201	1,400 Square Feet \$3,430/Month Modified Gross (Tenant pays interior janitorial)	Reception area. 2 Open areas. Private office overlooking Wilshire. 2 entrances. Operable windows.
208 LEASED	620 Square Feet \$1,550 per month Modified Gross (Tenant pays interior janitorial)	Laminate floors Waiting room/reception area Open area 2 operable windowed offices overlooking Wilshire
270	775 Square Feet \$1,500 per month Modified Gross (Tenant pays interior janitorial)	2 room office overlooking Wilshire Blvd
248 LEASED	650 Square Feet \$1,650/month (Tenant pays interior janitorial)	Small reception area 2 windowed offices New floors and paint

Term

2 - 5 years.

Parking

Reserved parking available for \$175 per month. Shared customer parking lot available at **no extra charge.**

Area

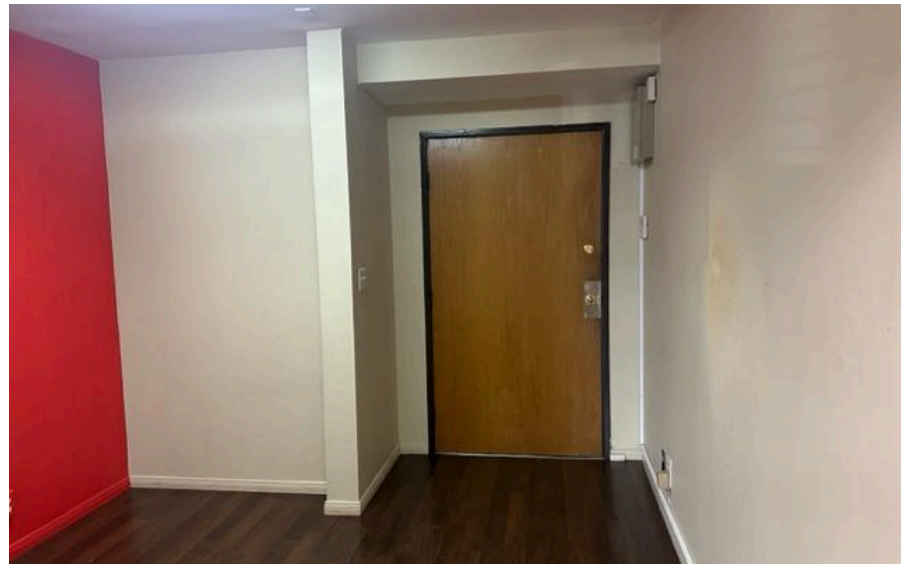
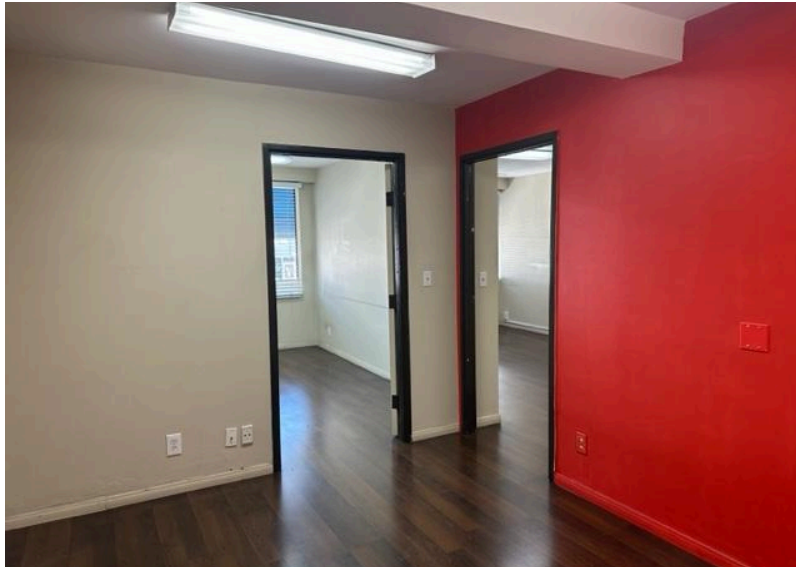
Easy access to West LA, Brentwood, Downtown Santa Monica.
Across from Whole Foods and an abundance of local eateries and other amenities just steps away.

Prime Santa Monica location with easy access to the 10 Freeway, West Los Angeles, Brentwood, Mar Vista, Culver City, Venice & Marina Del Rey.

Unit 201 Photos



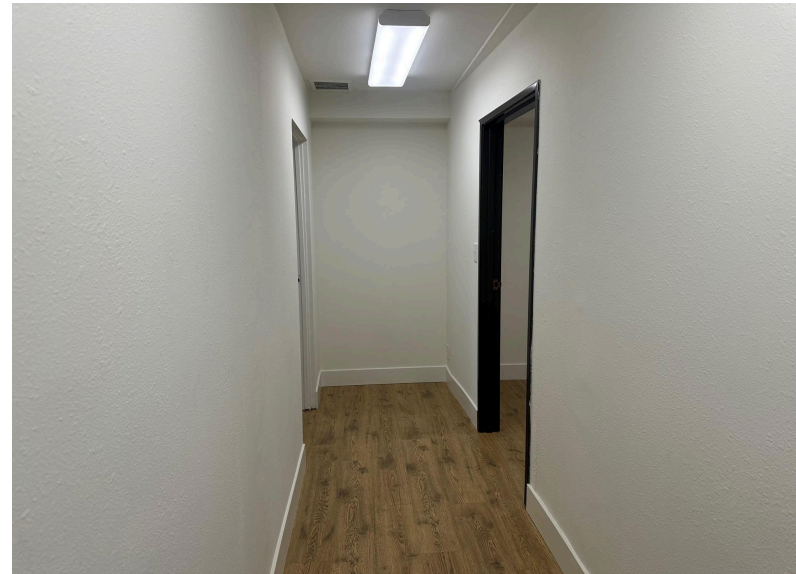
Unit 208 Photos



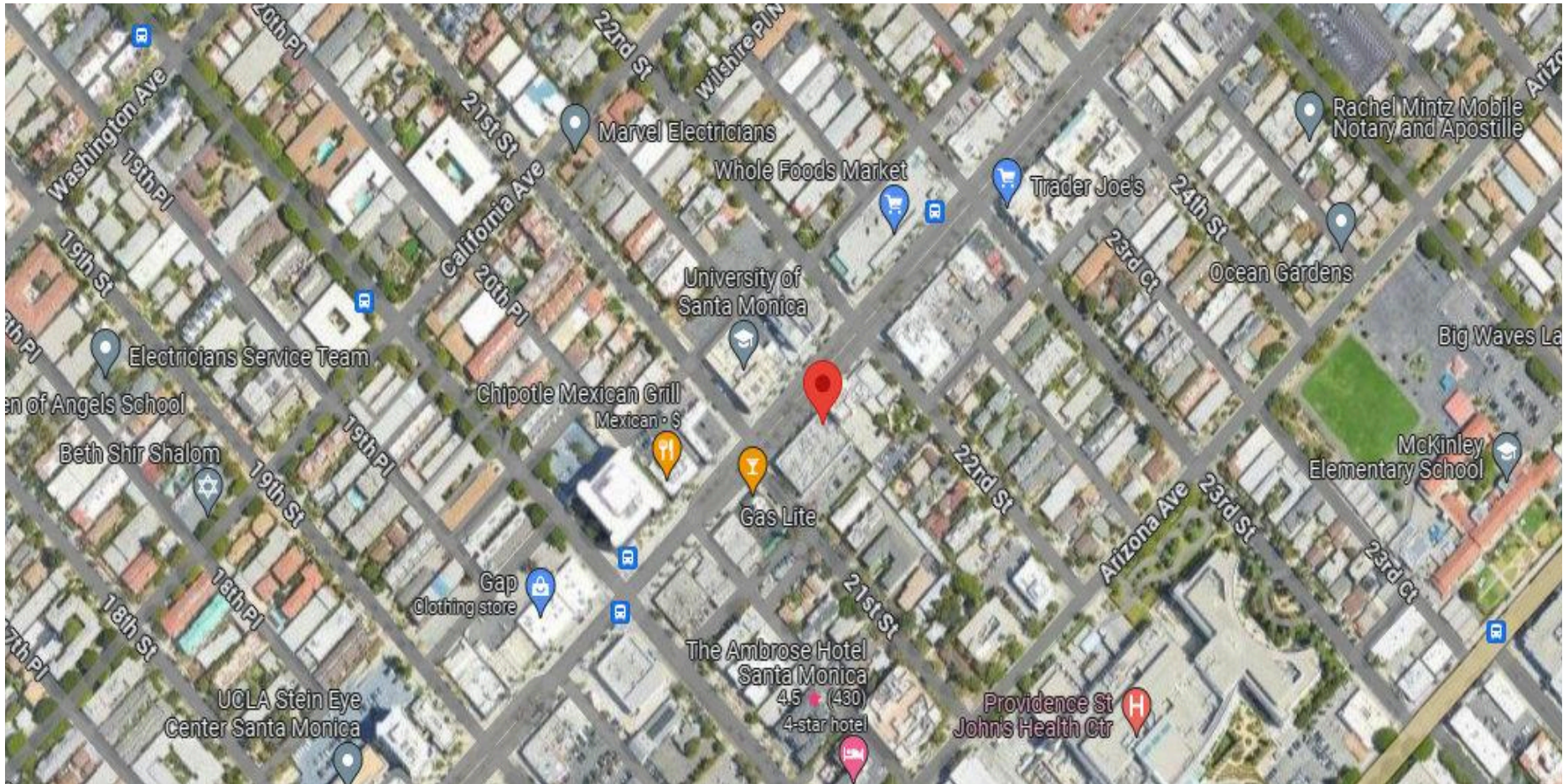
Unit 270 Photos



Unit 248 Photos



Map View



1513 6th Street, Suite 201 A • Santa Monica, CA 90401 • (310) 458-4100 • FAX (310) 458-4100 www.muselli.net

DRE BROKER # 00825237

All information furnished is from sources deemed reliable and which we believe to be correct, but no representation or guarantee is given as to its accuracy and is subject to errors and omissions. All measurements are approximate and have not been verified by the Broker. You are advised to conduct an independent investigation to verify all information.