

RATE REDUCTION!

2 Small Office Spaces On Wilshire / Santa Monica



2116 Wilshire Boulevard Unit 270 & 280, Santa Monica, CA 90403



Laura Pozarny, Executive Vice-President
(310) 458-4100 ext: 222
lpozarny@muselli.net
DRE License 02129230

Evan Pozarny, Executive Vice-President
310-458-4100 ext: 221
epozarny@muselli.net
DRE License 01304769

2 Small Office spaces are available now! This property is centrally located at Wilshire and 21st street in Santa Monica..

Units

Suite 270	Suite 280
775 SF \$1,500 per month Modified Gross 2 room office overlooking Wilshire Blvd	775 SF \$1,500 per month Modified Gross 2 windowed offices and a closet/storage area



Term

3 years.

Highlights

Tenant pays their own interior janitorial.

Bathroom

Shared men's and women's restrooms.

Parking

1 reserved parking spot available for \$175 per month. Shared customer parking lot available at ***no extra charge.***

Area

Easy access to West LA, Brentwood, Downtown Santa Monica. Across from Whole Foods and an abundance of local eateries and other amenities just steps away.

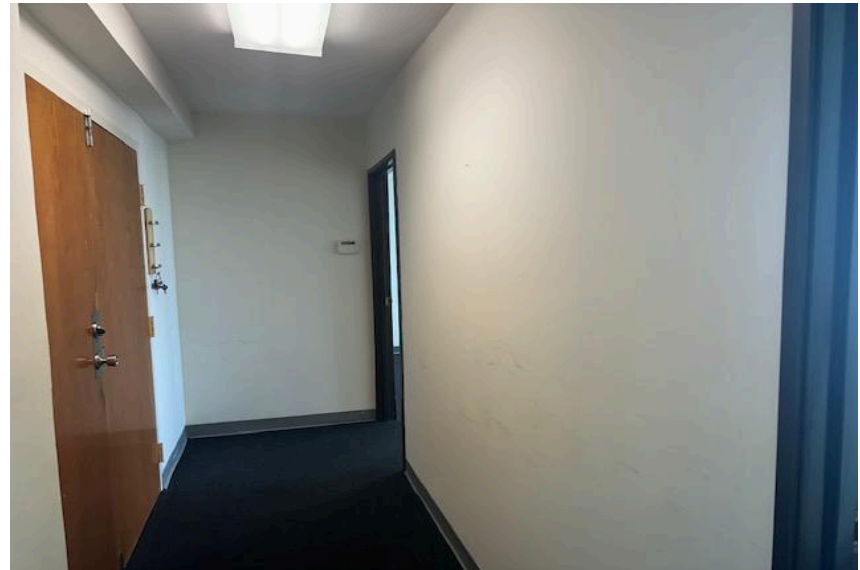
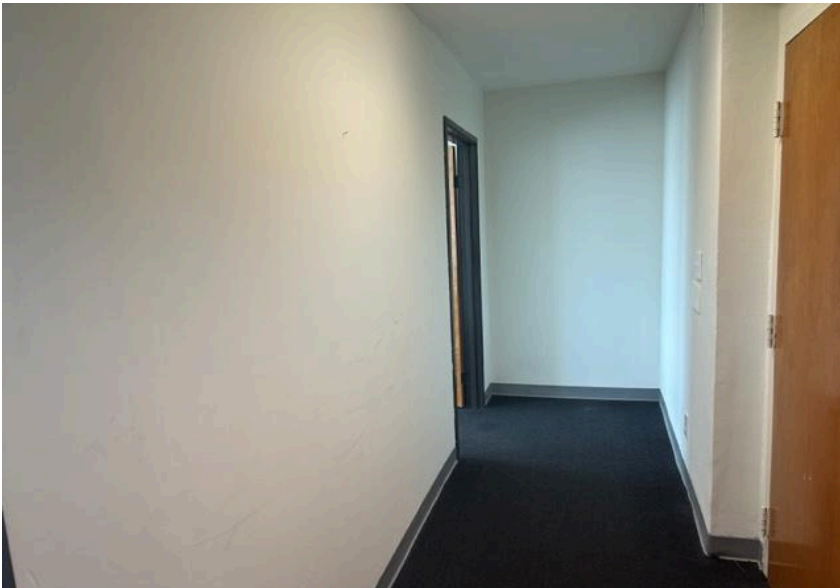
Prime Santa Monica location with easy access to the 10 Freeway, West Los Angeles, Brentwood, Mar Vista, Culver City, Venice & Marina Del Rey.

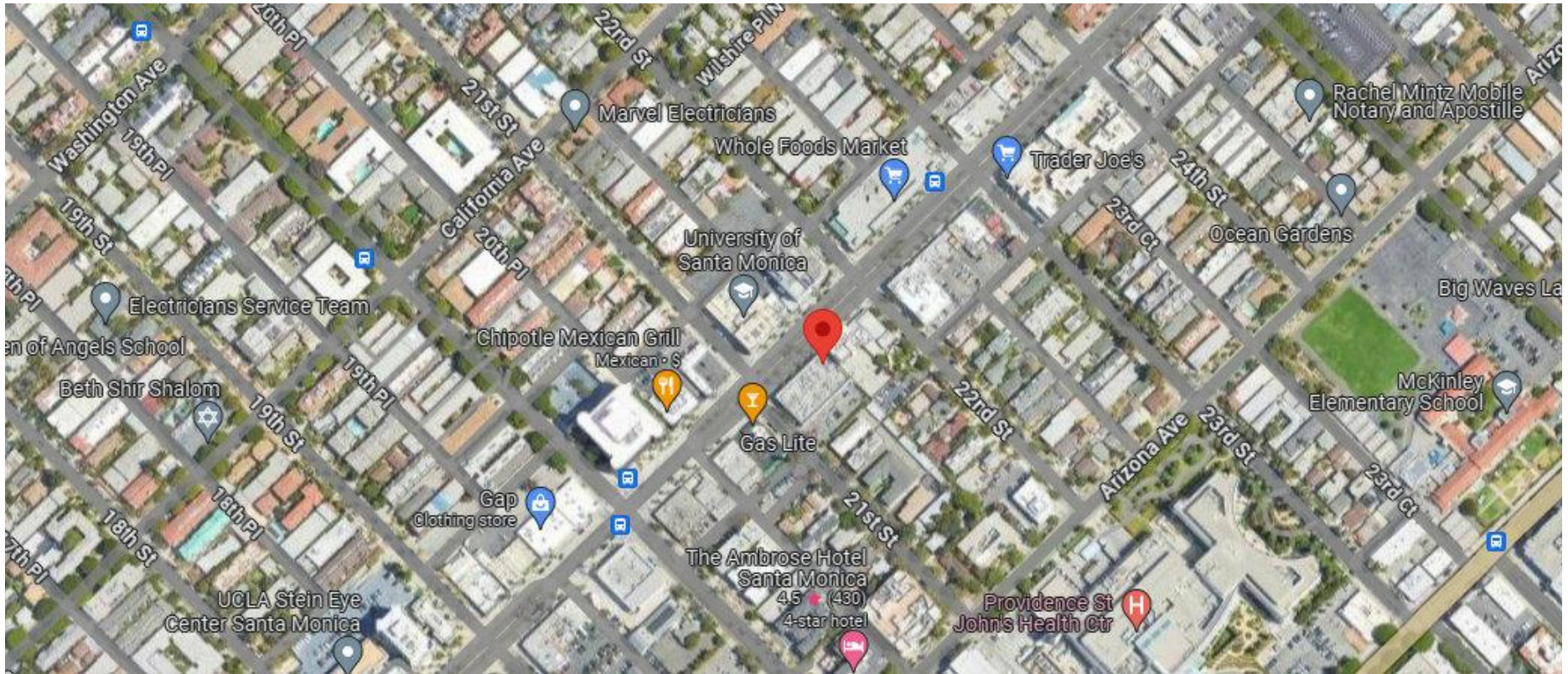


Unit 270 Photos



Unit 280 Photos





1513 6th Street, Suite 201 A • Santa Monica, CA 90401 • (310) 458-4100 • FAX (310) 458-4100 www.muselli.net

DRE BROKER # 00825237

All information furnished is from sources deemed reliable and which we believe to be correct, but no representation or guarantee is given as to its accuracy and is subject to errors and omissions. All measurements are approximate and have not been verified by the Broker. You are advised to conduct an independent investigation to verify all information.