



MONTANA AVE OFFICE FOR LEASE!

1230 MONTANA AVENUE SANTA MONICA, CA



Address: 1230 Montana Avenue, Unit 203, Santa Monica, CA 90403

Space Available:
Approximately 1,066 sq ft

Rental Rate:
\$6,660.00/Month MG

Date Available:
April 1, 2020

Lease Length: 3 – 5 years.

Parking: ♦ 2 reserved parking spaces in a gated garage at no additional charge.

Description:

- ♦ Bright, apartment style office in the heart of the Montana Ave commercial district.
- ♦ 2 offices, open area, and kitchen.
- ♦ Large patio overlooking Montana Ave.
- ♦ 2 full bathrooms.
- ♦ Operable windows.
- ♦ Secured entry.
- ♦ High pedestrian and vehicle traffic.
- ♦ 10,200 square foot 2 story retail and office building.
- ♦ Co-Tenants include Brentwood General Store, Alchemy 43, and Lash Lounge.

Area:

- ♦ Close proximity to Brentwood, Pacific Palisades, and Downtown Santa Monica.
- ♦ More than 150 Restaurants and Shops located nearby.

Agent: Evan Pozarny (310) 458-4100 Ext. 221 BRE # 01304769 epozarny@muselli.net

1513 6th Street, Suite 201 A □ Santa Monica, CA 90401 □ (310) 458-4100 □ FAX (310) 458-4100

All information furnished is from sources deemed reliable and which we believe to be correct, but representation or guarantee is given as to its accuracy and is subject to errors and omissions. All measurements are approximate and have not been verified by Broker. You are advised to conduct an independent investigation to verify all information.

www.muselli.net

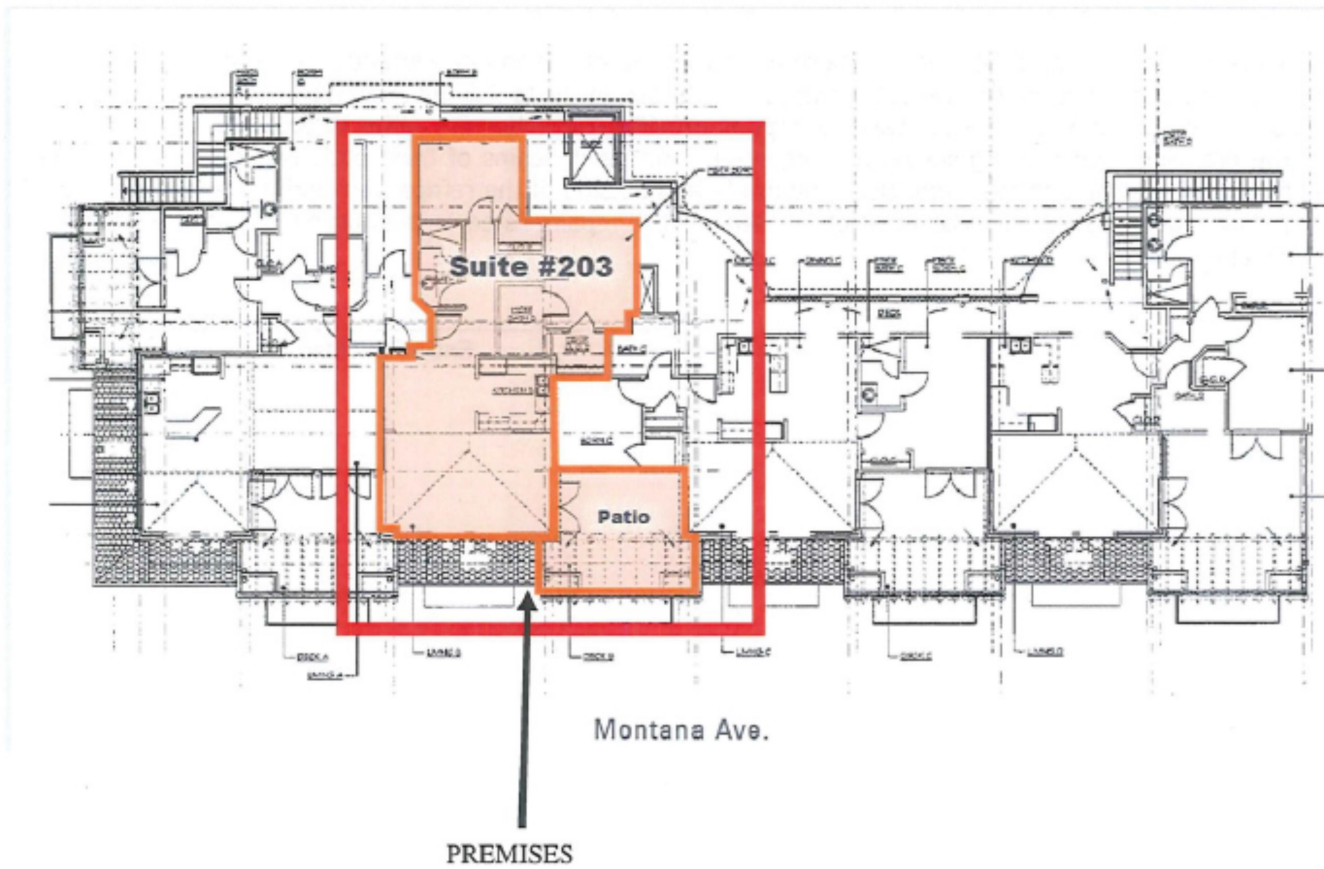


1230 Montana Avenue, Santa Monica, CA 90403



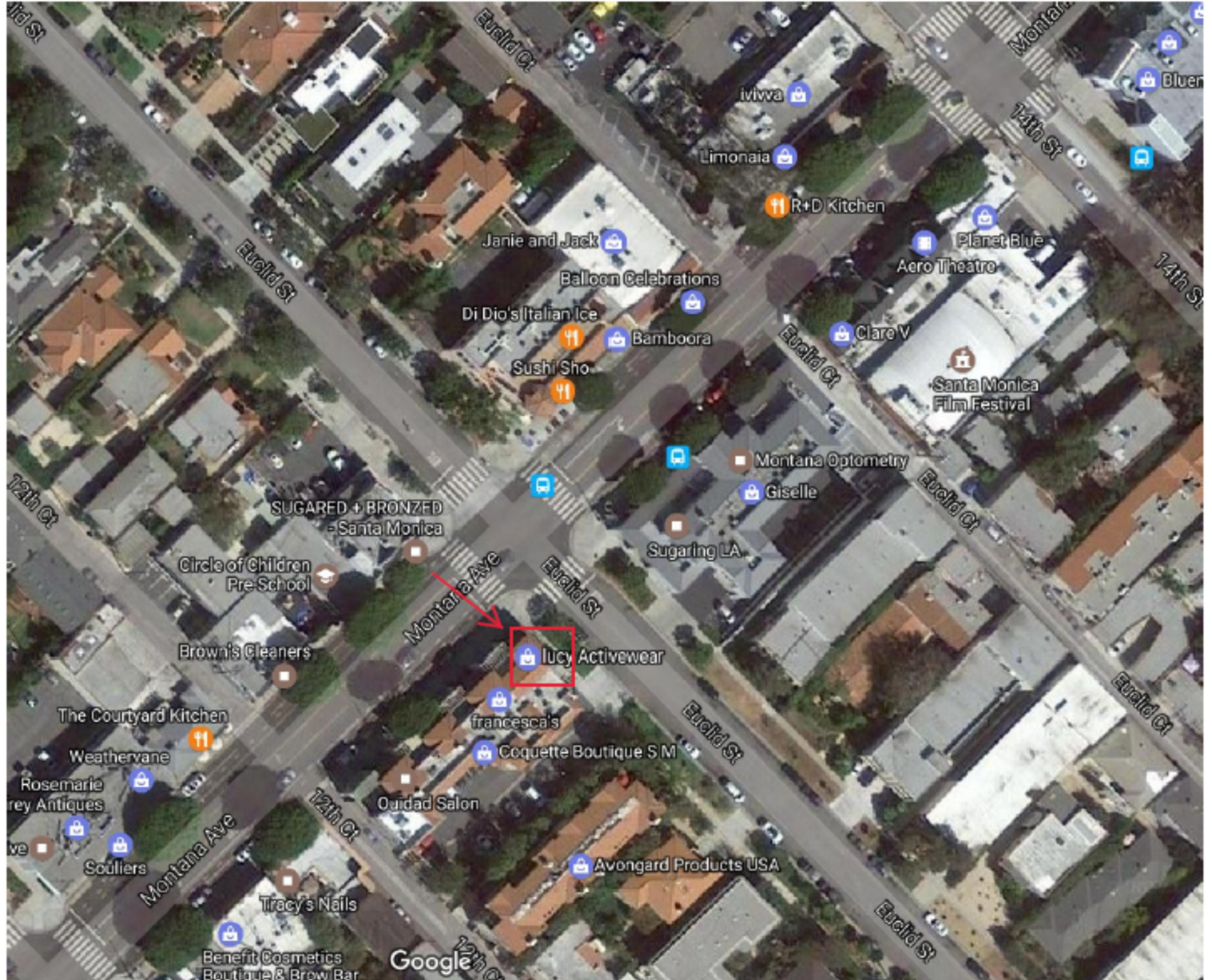


1230 Montana Avenue, Santa Monica, CA 90405
Site Plan





1230 Montana Avenue, Santa Monica, CA 90403 Aerial Map



1513 6th Street, Suite 201 A □ Santa Monica, CA 90401 □ (310) 458-4100 □ FAX (310) 458-4100

All information furnished is from sources deemed reliable and which we believe to be correct, but representation or guarantee is given as to its accuracy and is subject to errors and omissions. All measurements are approximate and have not been verified by Broker. You are advised to conduct an independent investigation to verify all information.

www.muselli.net

BRE BROKER # 00825237