

**FOR LEASE**  
**MAIN STREET RETAIL STOREFRONT - SANTA MONICA**



## Suite D **AVAILABLE NOW!**

- ◆ 1,100 SF with a 19-foot frontage.
- ◆ \$5.75 per SF plus NNN charges of \$1.05 per SF per month.
- ◆ Open space with high ceilings.
- ◆ 2 parking spaces on-site and included at no additional charge.
- ◆ Can be combined with Suite C. for an additional 780 SF.

## Suite C **LEASED!**

- ◆ 780 SF with a 19-foot frontage.
- ◆ \$5.75 per SF plus NNN charges of \$1.05 per SF per month.
- ◆ Beautifully built-out retail/showroom space with high ceilings, lots of windows facing both Main Street and the interior courtyard.
- ◆ 2 parking spaces on-site and included at no additional charge.
- ◆ Can be combined with Suite D for an additional 1,100 SF.

## Suite A **LEASED!** Welcome to UPPAbaby Stroller & Car Seats! Learn more [here](#).

- ◆ 900 SF with a 19-foot frontage.
- ◆ \$5.75 per SF plus NNN charges.

## Suite B **LEASED!**

- ◆ 900 SF with a 19-foot frontage.
- ◆ \$5.75 per SF plus NNN charges of \$1.07 per SF per month.

## Neighboring Tenants & Market Area

- ◆ Highly attractive French Quarter designed building with a Central Courtyard.
- ◆ Located in the heart of Main Street! Tenants nearby include Starbucks, Ashland Hill, Jameson's, UPPAbaby, Arts and Letters, Wolfgang Puck's Chinois on Main, Lula's, California Heritage Museum, La Vecchia Cucina, Lost and Found, and Urth Café.
- ◆ A high-income neighborhood within walking distance to Main Street.
- ◆ Easy access to the Beach, Downtown Santa Monica, Venice, and Abbot Kinney retail district.

## Demographics - 3 Mile Radius

- ◆ \$100,000 median household income.
- ◆ 184,000 households.
- ◆ 143,591 daytime employees.
- ◆ The average age is 42.

Suite D - 1,100 SF



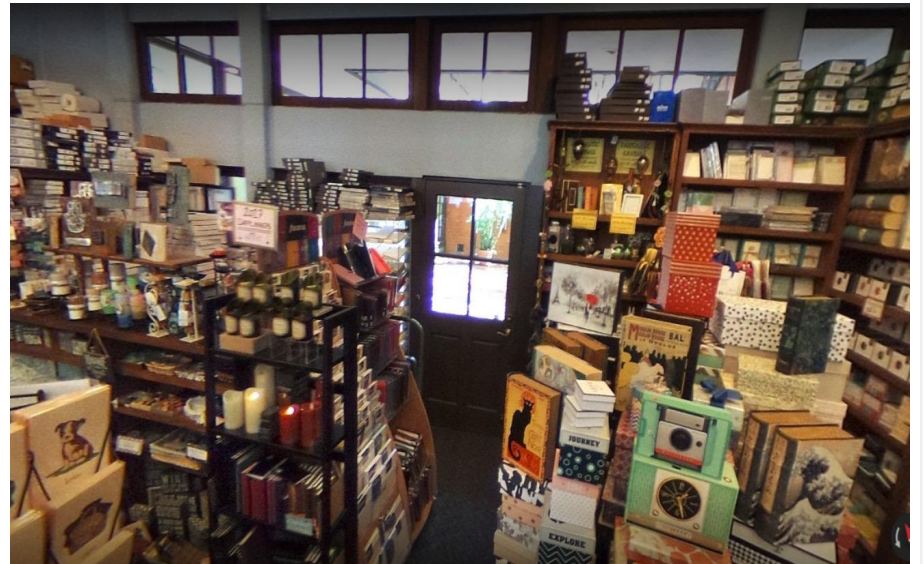
Suite C - 780 SF

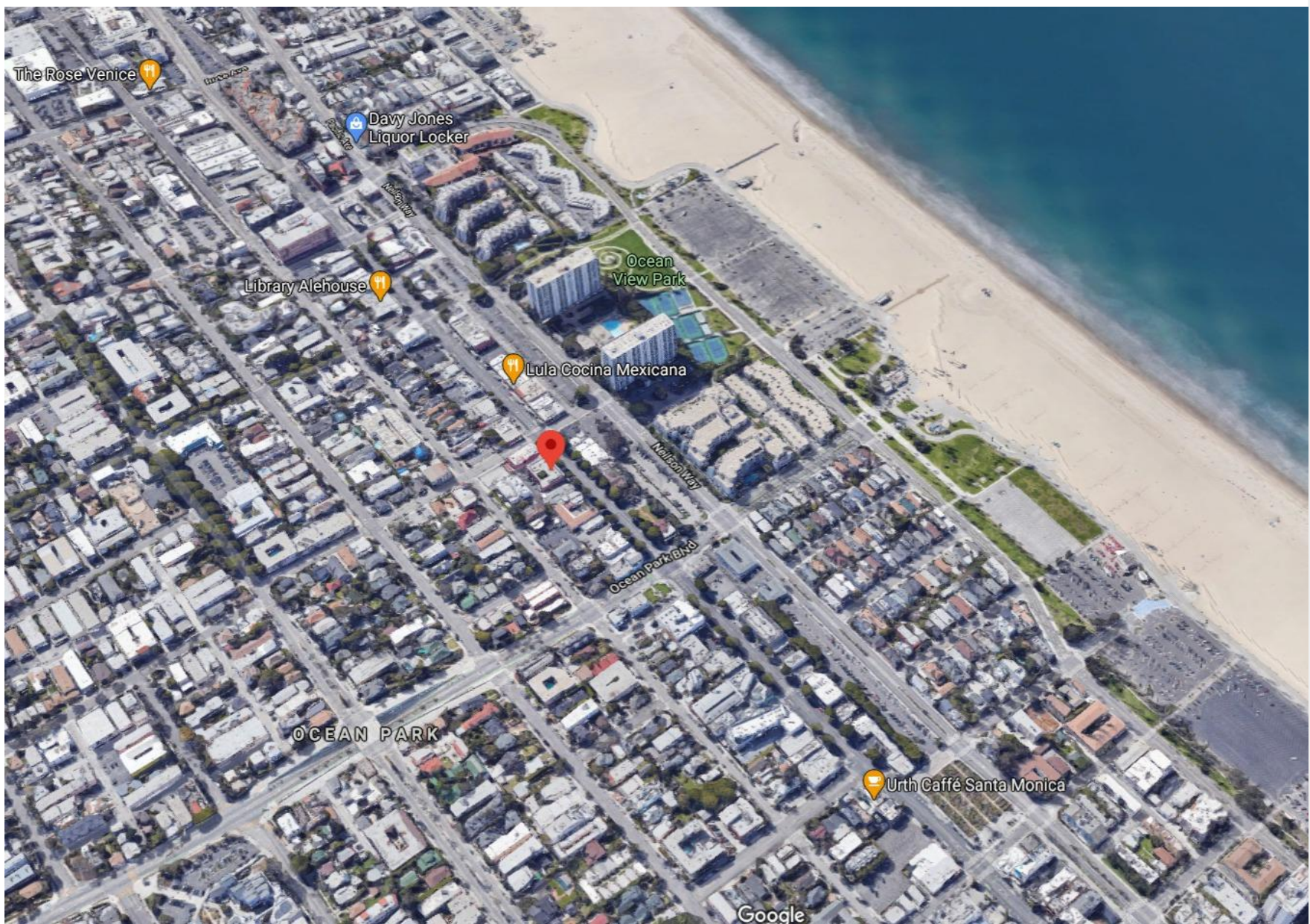


**Suite D**



**Suite C**





1513 6<sup>th</sup> Street, Suite 201 A • Santa Monica, CA 90401 • (310) 458-4100 • FAX (310) 458-4100 [www.muselli.net](http://www.muselli.net)  
**DRE BROKER # 00825237**

All information furnished is from sources deemed reliable and which we believe to be correct, but no representation or guarantee is given as to its accuracy and is subject to errors and omissions.

All measurements are approximate and have not been verified by the Broker.

You are advised to conduct an independent investigation to verify all information.