

FOR LEASE
STREET RETAIL / CREATIVE SPACE
828 PICO BLVD, SANTA MONICA, CA 90405



www.muselli.net

Laura Pozarny, Executive Vice-President
(310) 458-4100 ext: 222
lpozarny@muselli.net
DRE License 02129230

Evan Pozarny, Executive Vice-President
(310) 458-4100 ext: 221
epozarny@muselli.net
DRE License 01304769

Pico Boulevard is a highly trafficked east-west corridor with over 22,000 car trips per day. 828 Pico is located near the signalized intersection of Lincoln and Pico Boulevards and the Santa Monica Freeway entrance is within a one-half mile to the north. Santa Monica College is one mile away to the east. The central location provides for easy access to all of Santa Monica, Marina Del Rey, Abbot Kinney, Pacific Palisades, West Los Angeles, Culver City, and Venice.

The available spaces are a nicely improved 4,000 SF with interior lofts in a single-story building and a 2,975 SF with interior lofts. **The spaces can be combined for a total of 6,975 SF.**

Spaces Available Now

- Unit 4** Approximately 1,575 SF.(1,250 SF ground floor and 325 SF mezzanine.
\$5,906.25 + NNN cost of \$1,606.50
- Units 5 - 6** Approximately 2,975 SF (2,354 SF ground floor and 621 SF mezzanine).
\$3.75 per SF plus NNN charges of approximately \$1.20 per SF per month.
Large open space with high ceilings and a mezzanine.
1 ADA bathroom.
Heating and Air Conditioning System.
The space can be combined with Units 7 - 9 for an additional 4,000 SF.
- Units 7 - 9** Approximately 4,000 SF ground floor. No mezzanine..
\$4.00 per SF plus NNN charges of approximately \$1.20 per SF per month.
Large open area with high ceilings in a beautiful bow truss building.
Great street visibility.
2 ADA bathrooms. Lessee to verify compliance with current ADA codes.
Loading door.
Heating and Air Conditioning System.
The space can be combined with Units 5 - 6 for an additional 2,975 SF.
- Parking** Tandem parking in the rear of the property at **No Cost.**
- Area** Great centrally located Santa Monica location.
Restaurants, fast food, retail, auto, and many other services are nearby.
Santa Monica College is one mile to the east.
Close to the 10 FWY, Metro, and Big Blue Bus.

Zoning General Commercial - GC [Click](#) here for GC Santa Monica Zoning and Uses.

Year Built 1984.



Unit 4



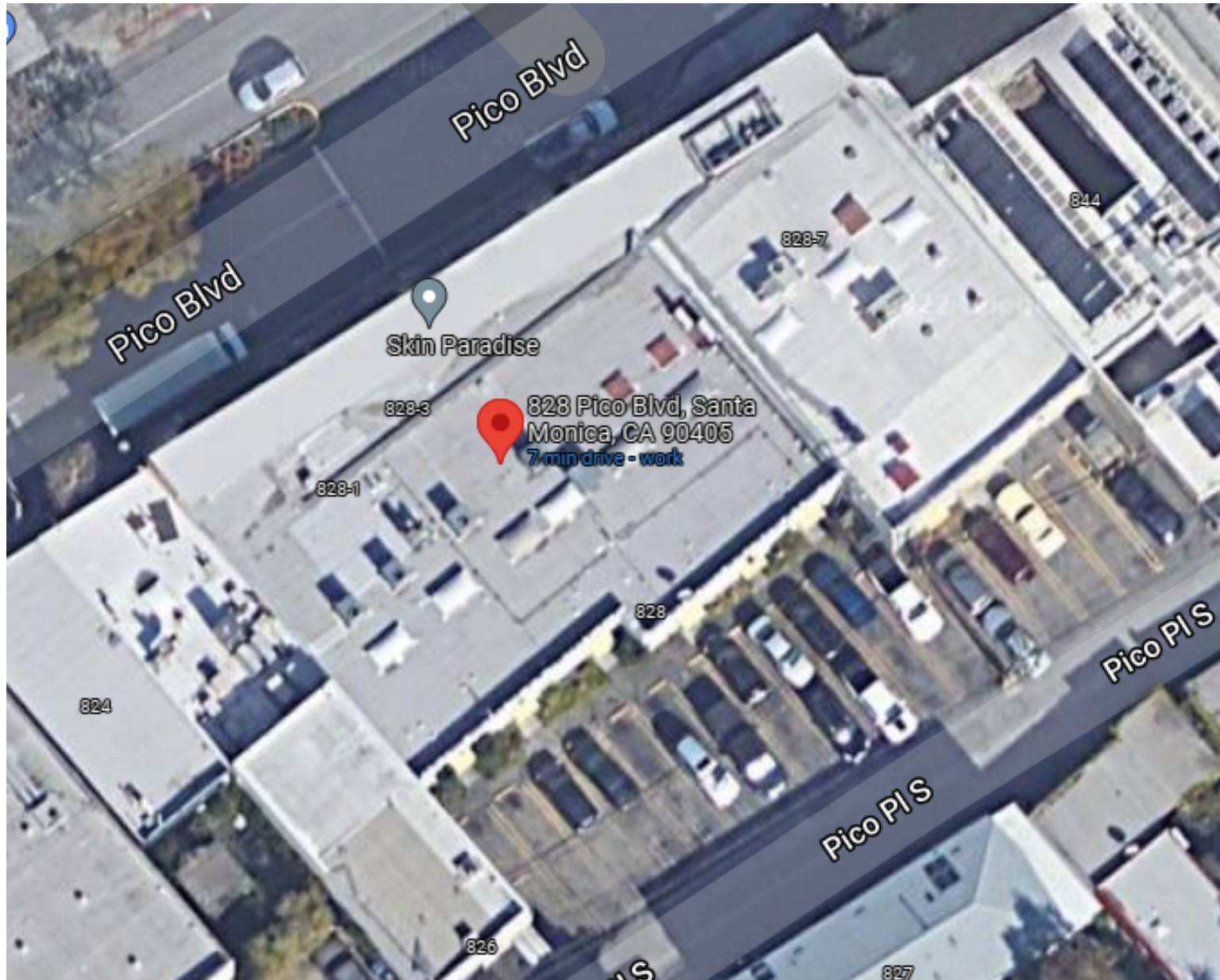
Units 5 - 6



Units 7 - 9

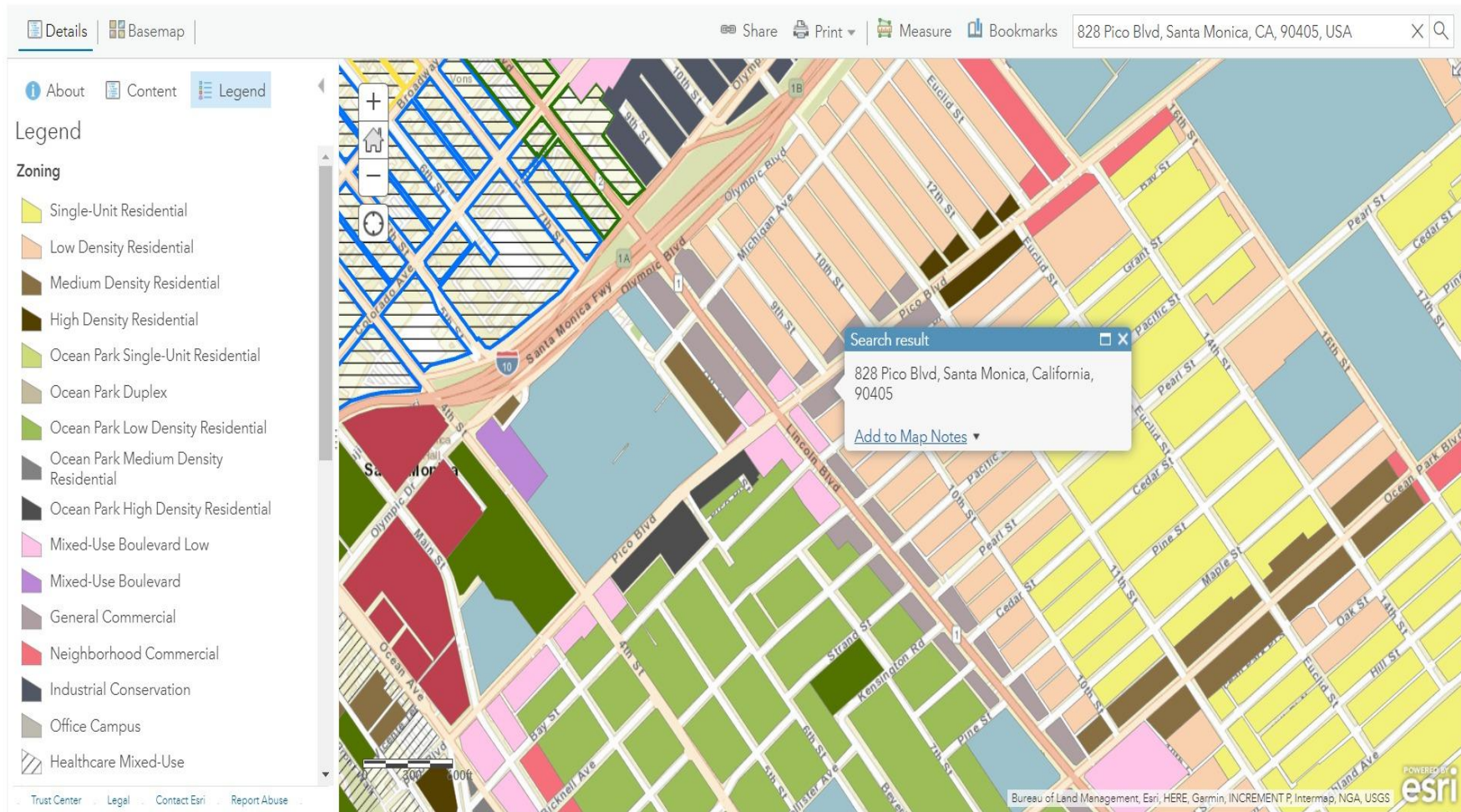


Rear Parking Lot

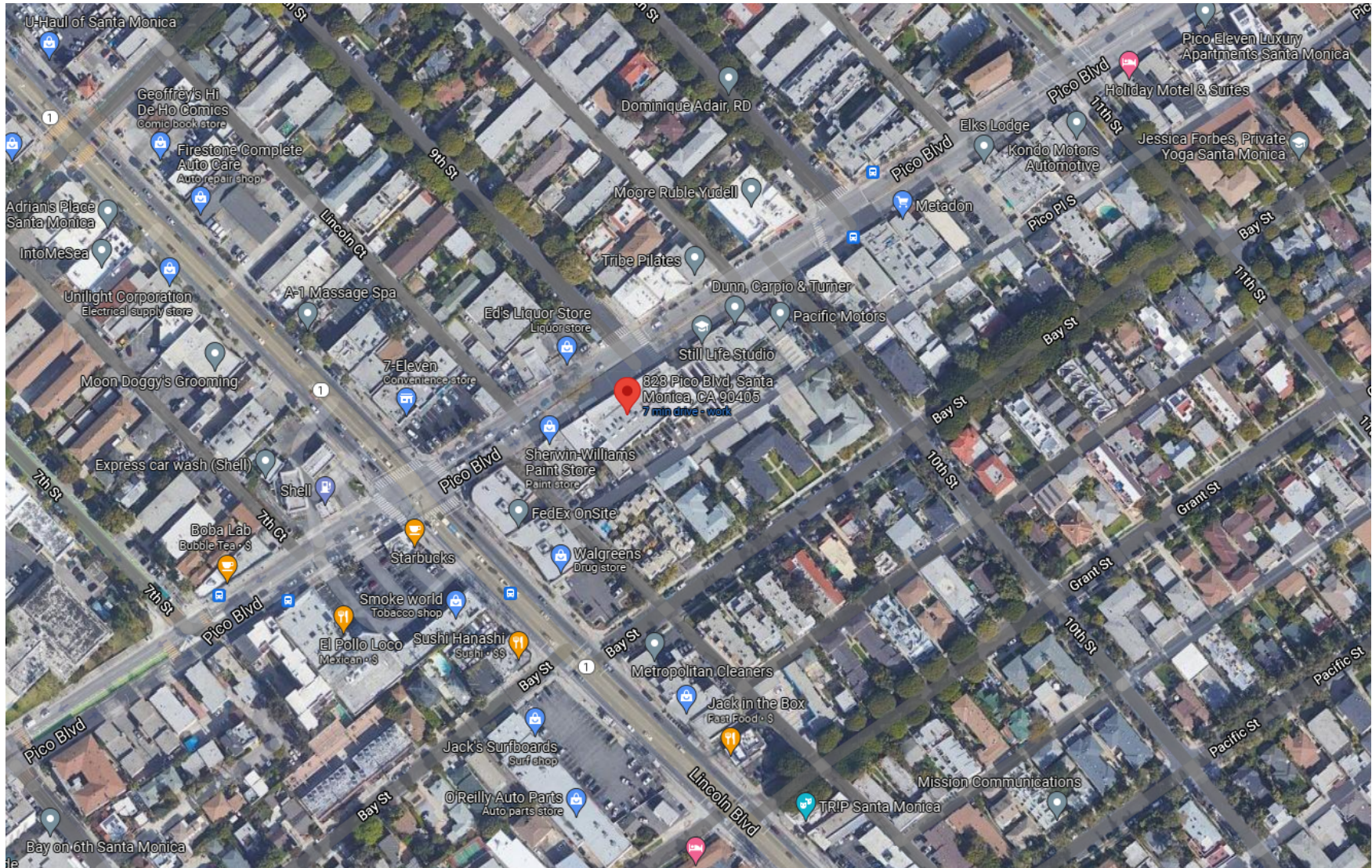


ArcGIS ▾ Santa Monica Zoning

[Open in new Map Viewer](#) [Modify Map](#) [Sign In](#)



Zoning is General Commercial - GC [Click](#) here for GC Santa Monica Zoning and Uses.



1513 6th Street, Suite 201 A • Santa Monica, CA 90401 • (310) 458-4100 • FAX (310) 458-4100 www.muselli.net
DRE BROKER # 00825237

All information furnished is from sources deemed reliable and which we believe to be correct, but representation or guarantee is given as to its accuracy and is subject to errors and omissions. All measurements are approximate and have not been verified by the Broker. You are advised to conduct an independent investigation to verify all information.