

Motivated Lessor - Major Rental Rate Reduction!
\$1,725.00 + 3 Free Parking Spaces!

Marina del Rey 2nd Floor Creative Office Space + Private Rooftop Covered Patio



13327 Beach Avenue, Marina del Rey, CA 90292



Laura Pozarny, Executive Vice-President
(310) 458-4100 ext: 222
lpozarny@muselli.net
DRE License 02129230

Evan Pozarny, Executive Vice-President
310-458-4100 ext: 221
epozarny@muselli.net
DRE License 01304769



13327 Beach Avenue consists of a nicely improved 850 SF creative office space in a two-story building. It is the only space located on the second floor and has its own private front entrance making it ideal for social distancing. It is located near the signalized intersection of Washington and Lincoln Boulevards and within walking distance of local restaurants and retailers.

The coastal community of Marina del Rey is located on the Westside between Venice Beach and Playa del Rey, 4 miles north of Los Angeles International Airport. Marina del Rey is considered one of the neighborhoods in “Silicon Beach”, which is home to more than 500 technology companies including startups on the Westside. Santa Monica is just a few miles north and Culver City is adjacent to the east.

Rental Rate & Term

Motivated Lessor - Major Rental Rate Reduction!
\$1,725.00 + 3 Free Parking Spaces!

Lessor pays the utilities. The Lessee provides janitorial service.
2 to 3-year lease term with annual 3% increases.

Space

Approximately 850 rentable square feet
Private entrance with a staircase to the 2nd floor.
Large bright open floor plan.
Operable windows.
Private covered rooftop patio.

HVAC

Yes.

Bathroom

1 private bathroom.

Kitchenette

Yes.

Parking

3 reserved spaces In front of the building at no cost.

Elevator

None.

Year Built

1971.

Area

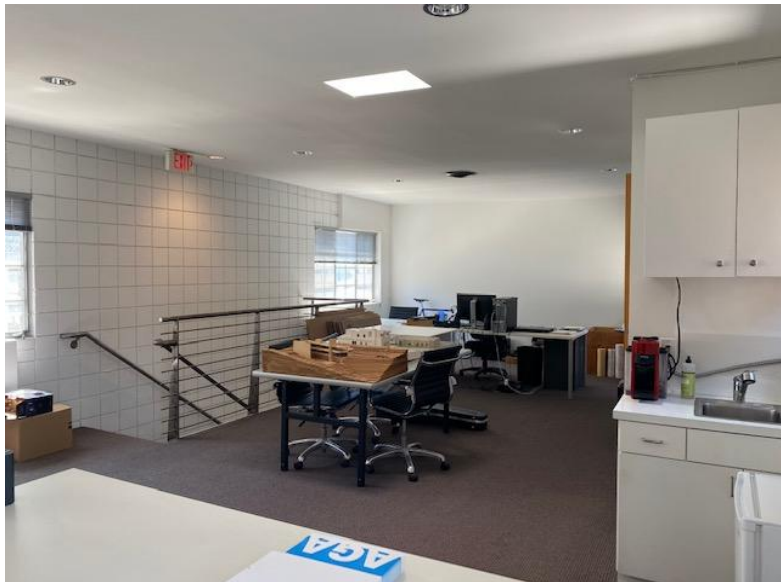
Close to the Marina Collection, Marina Market Place, Villa Marina Shopping Center, an Costco/ Albertsons Shopping Center.
Numerous Lofts, and Production Companies in the immediate area.

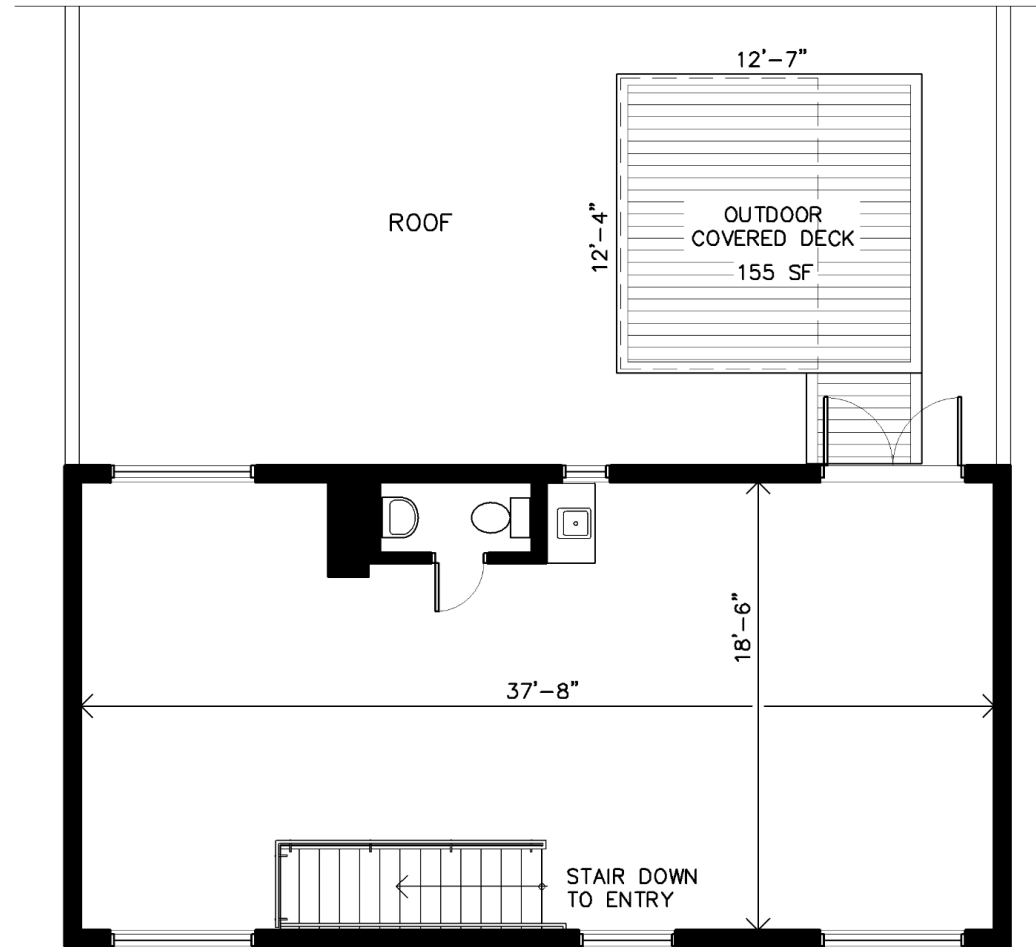
Tourism

[Click here for information from the Marina del Rey Tourism Board.](#)

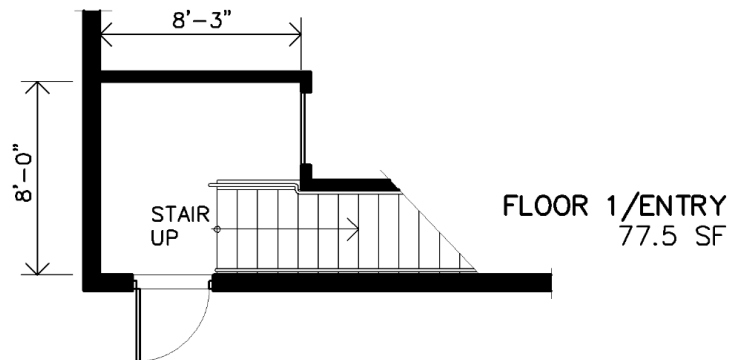


Photos / Floor Plan / Map View

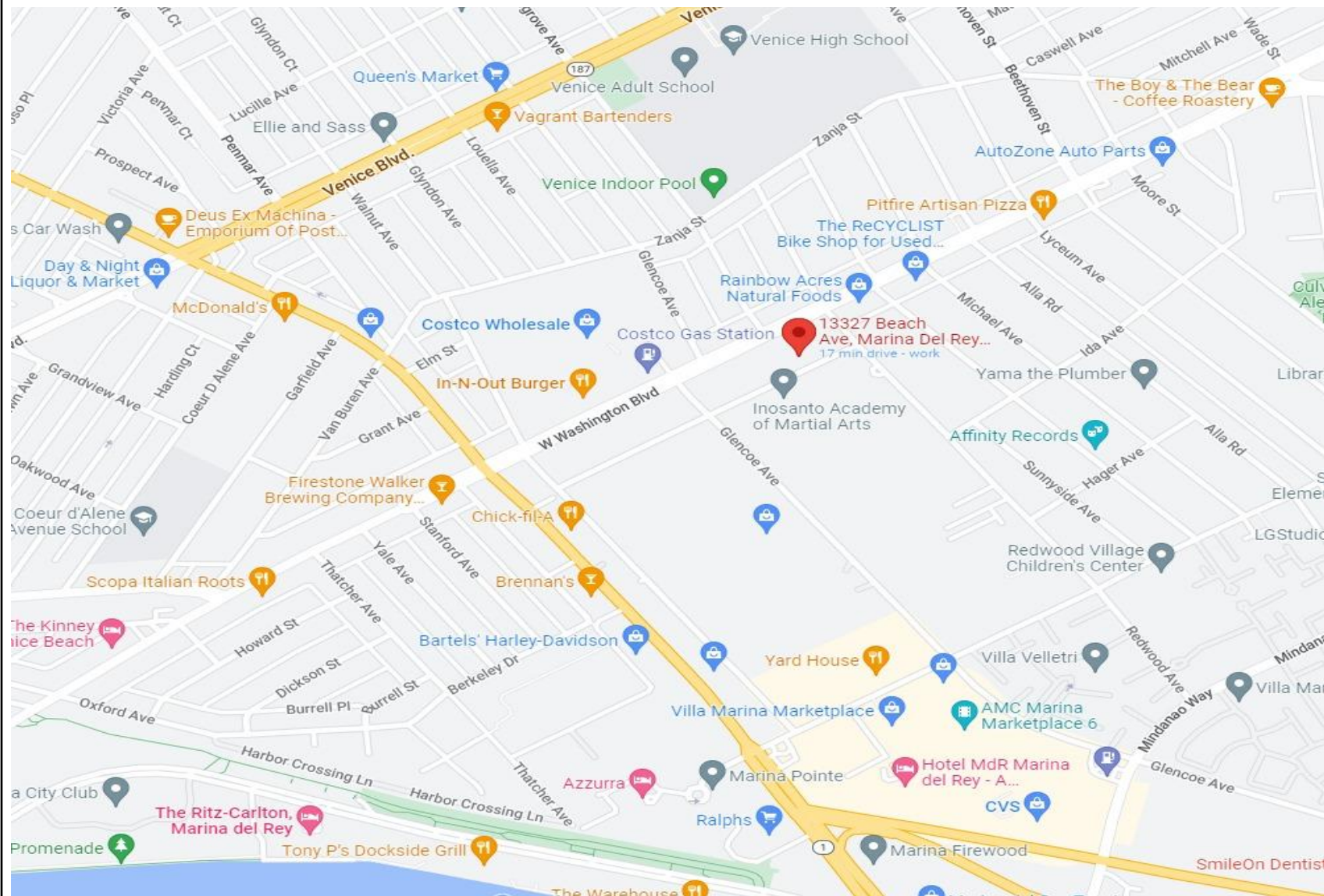




FLOOR 2
772.5 SF



FLOOR 1/ENTRY
77.5 SF



1513 6th Street, Suite 201 A • Santa Monica, CA 90401 • (310) 458-4100 • FAX (310) 458-4100 www.muselli.net
DRE BROKER # 00825237

All information furnished is from sources deemed reliable and which we believe to be correct, but representation or guarantee is given as to its accuracy and is subject to errors and omissions. All measurements are approximate and have not been verified by the Broker. You are advised to conduct an independent investigation to verify all information.