

# FOR LEASE!

**BAR AND RESTAURANT at O HOTEL with 47 License / DOWNTOWN LA**  
**NO KEY MONEY!**



**819 S. Flower Street, Los Angeles, CA 90017**



Laura Pozarny, Executive Vice-President  
(310) 458-4100 ext: 222  
[lpozarny@muselli.net](mailto:lpozarny@muselli.net)  
DRE License 02129230

Evan Pozarny, Executive Vice-President  
310-458-4100 ext: 221  
[epozarny@muselli.net](mailto:epozarny@muselli.net)  
DRE License 01304769

Excellent opportunity for a bar/restaurant to service a hip neighborhood and built-in clientele at the trendy O Hotel. Surrounded by well-established businesses, in a booming neighborhood, this is a dream location for a bar operator to open their first location or expand their business into this popular urban marketplace.

**Lease Rate**                \$3.00 per SF per month Modified Gross (net of utilities). NO KEY MONEY!

**Size**                        Approximately 2,500 Square Feet

**Term**                      5-10 Years

**Highlights**                Chic basement level bar/restaurant just off the hotel lobby  
Great for a speakeasy or lounge  
Fully equipped kitchen  
Type 47 License owned by the hotel

**Parking**                    Street parking or in the parking structure adjacent to the property.

**Area**                        The neighborhood surrounding O Hotel is an exciting and dynamic area of downtown Los Angeles. Located just steps away from some of the city's most popular attractions, such as the Staples Center and LA Live, you'll never be far from the action. Walking distance to LA Live, Staples Center, Downtown Fashion District, and many Restaurants and Bars.



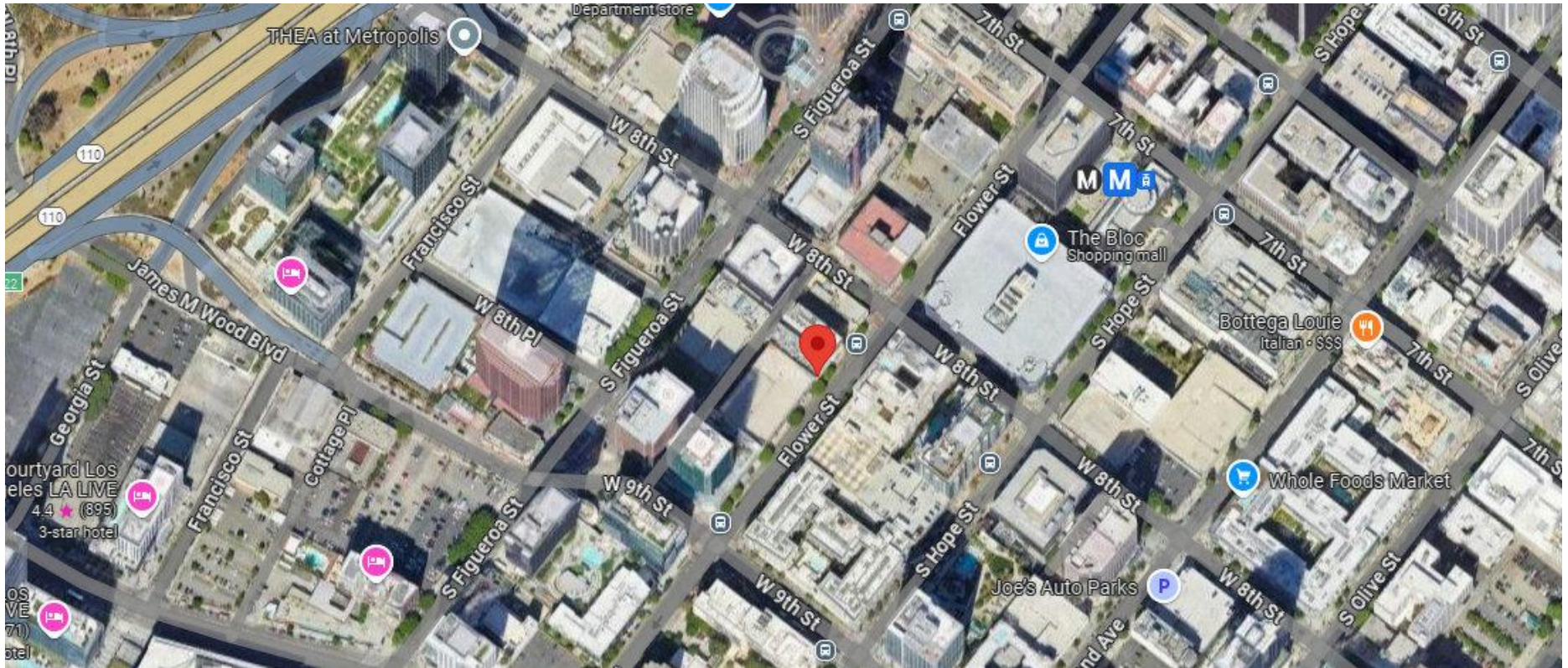
## Interior Photos



Interior Photos



## Location Map



1513 6<sup>th</sup> Street, Suite 201 A • Santa Monica, CA 90401 • (310) 458-4100 • FAX (310) 458-4100 [www.muselli.net](http://www.muselli.net)

DRE BROKER # 00825237

All information furnished is from sources deemed reliable and which we believe to be correct, but representation or guarantee is given as to its accuracy and is subject to errors and omissions. All measurements are approximate and have not been verified by the Broker. You are advised to conduct an independent investigation to verify all information.