

FOR LEASE

Westwood | Entire 2nd Floor Office Available Now



1609 Westwood Boulevard, Los Angeles, CA 90064



Laura Pozarny, Executive Vice-President
(310) 458-4100 ext: 222
lpozarny@muselli.net
DRE License 02129230

Evan Pozarny, Executive Vice-President
310-458-4100 ext: 221
epozarny@muselli.net
DRE License 01304769



Muselli Commercial Realtors is excited to present this office building located on Westwood Boulevard and Ohio Avenue in the heart of Westwood.
Available Immediately!

Units

Unit	Size	Price	Description	Availability
200	4,000 SF	\$10,000/month Modified Gross (Tenant pays janitorial)	Brand new Lots of natural light Overlooking Westwood Blvd Large open space 2 restrooms Server/storage room Large kitchenette Wheelchair lift	Immediate

Lease Term

1 - 3 years with options.

Highlights

2 story building.
Move-in Ready.

Parking

Monthly parking available at \$250/month.

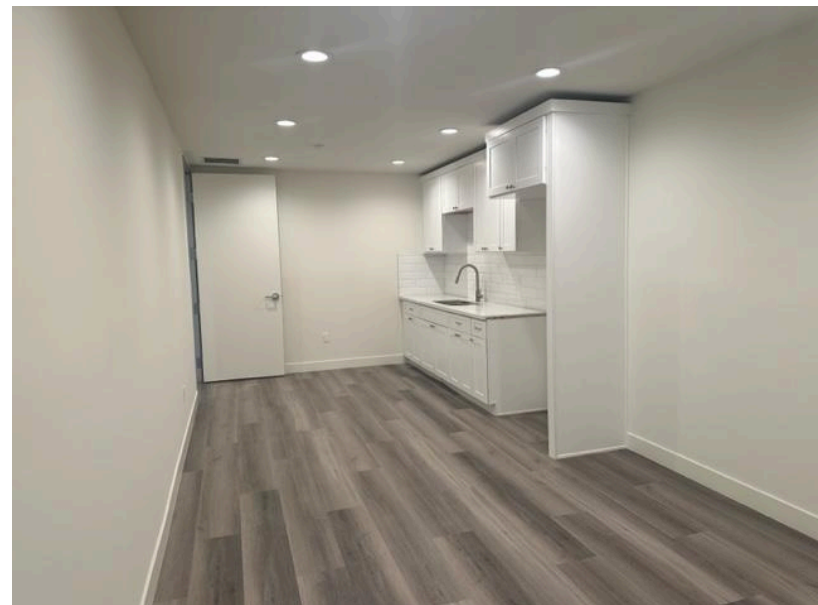
Restrooms

Private restroom.

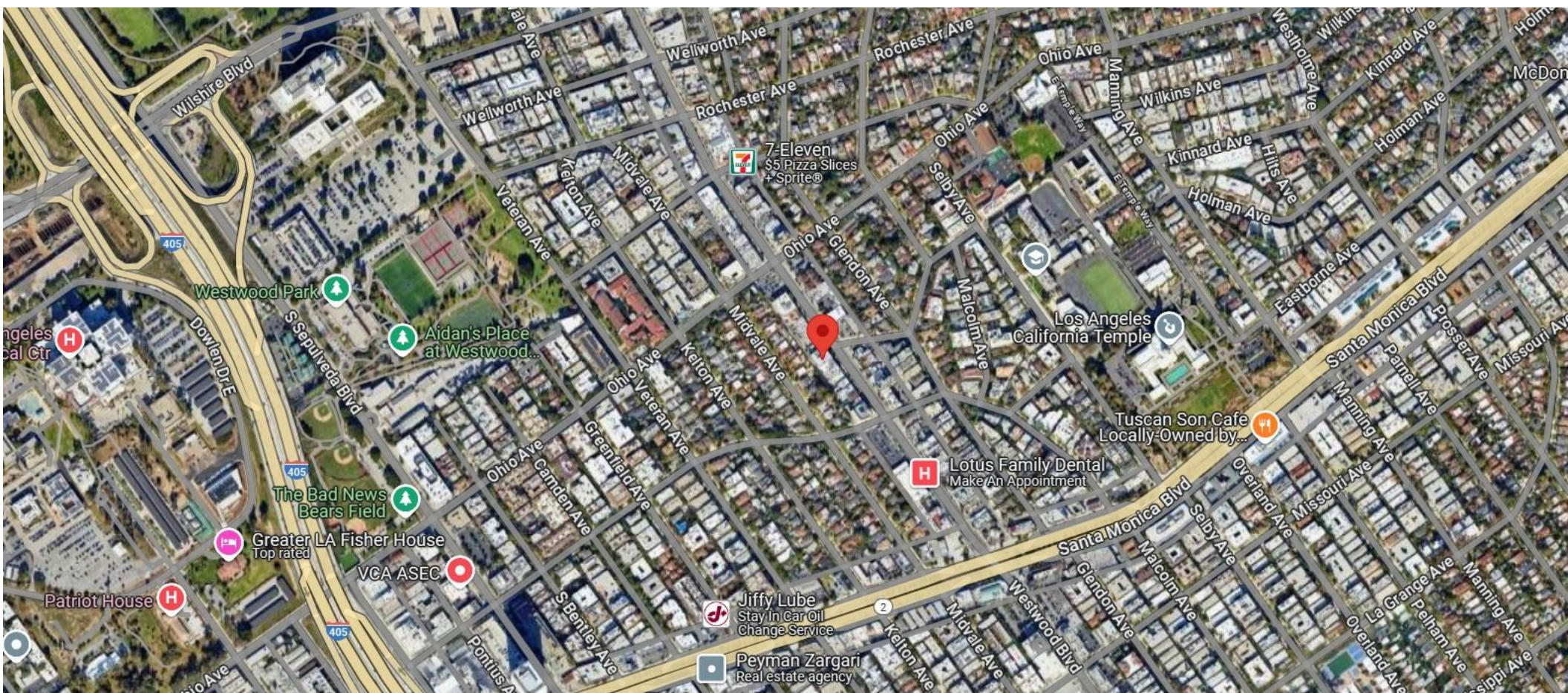
Area

Prime Westwood location with many restaurants and eateries within close proximity including: Sunin, Hoboken, Big Chill, Rabbi's Daughter, Maria's Italian Kitchen, Gyu-kaku, Poquito Mas, Big Chill, Starbucks, Panda Express, California Chicken Cafe, Tacos Tu Madre, The Room Sushi, Apple Pan, and many more.

Photos



Aerial View



1513 6th Street, Suite 201 A • Santa Monica, CA 90401 • (310) 458-4100 • FAX (310) 458-4100 www.muselli.net
DRE BROKER # 00825237

All information furnished is from sources deemed reliable and which we believe to be correct, but representation or guarantee is given as to its accuracy and is subject to errors and omissions. All measurements are approximate and have not been verified by the Broker. You are advised to conduct an independent investigation to verify all information.