

NEW LISTING!

Small Office Sublease in Downtown Santa Monica



1250 6th Street, Suite 200 Santa Monica, CA 90401



Laura Pozarny, Executive Vice-President
(310) 458-4100 ext: 222
lpozarny@muselli.net
DRE License 02129230

Evan Pozarny, Executive Vice-President
310-458-4100 ext: 221
epozarny@muselli.net
DRE License 01304769

Now leasing two private offices inside a professional law suite in the heart of Santa Monica! Office A (176 SF) and Office B (132 SF) are each available for \$1,500/month and include access to a shared reception area, conference room, and kitchen. Located in a secure, corner building in the heart of Downtown Santa Monica, this is a perfect setup for attorneys, or solo professionals seeking a quiet, turnkey workspace in a prestigious location. Utilities and WiFi included.

Available Space

Office A 176 Square Feet
Office B 132 Square Feet

Lease Rate

Office A - \$1,850.00/month
Office B - \$1,500.00/month

Term

1 year

Space Highlights

Includes shared access to:

- Reception area
- Conference room
- Kitchen

Gated, corner building in the heart of Santa Monica
Move-in ready
Utilities and WiFi included

Bathroom

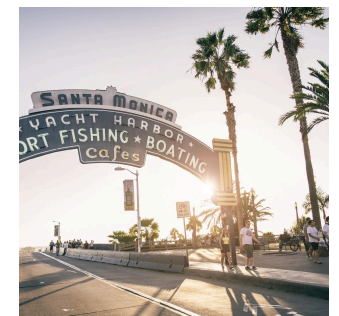
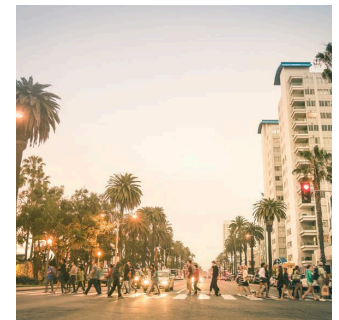
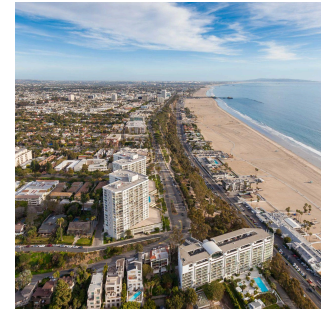
Shared Men's and Women's

Parking

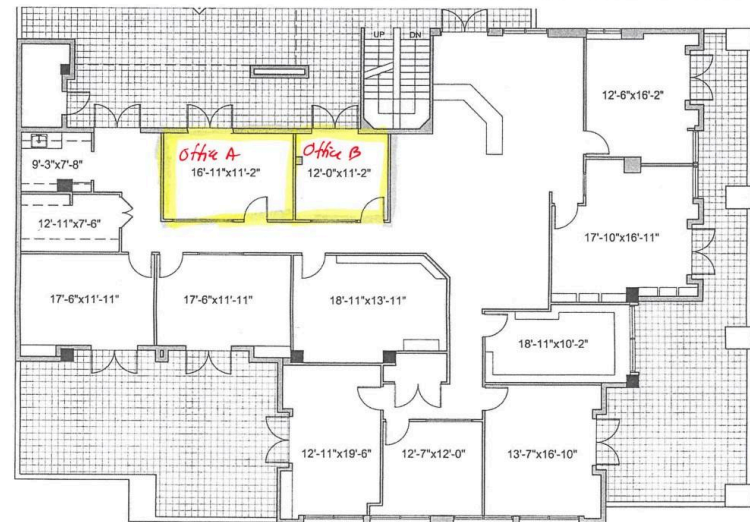
Ample street parking

Area

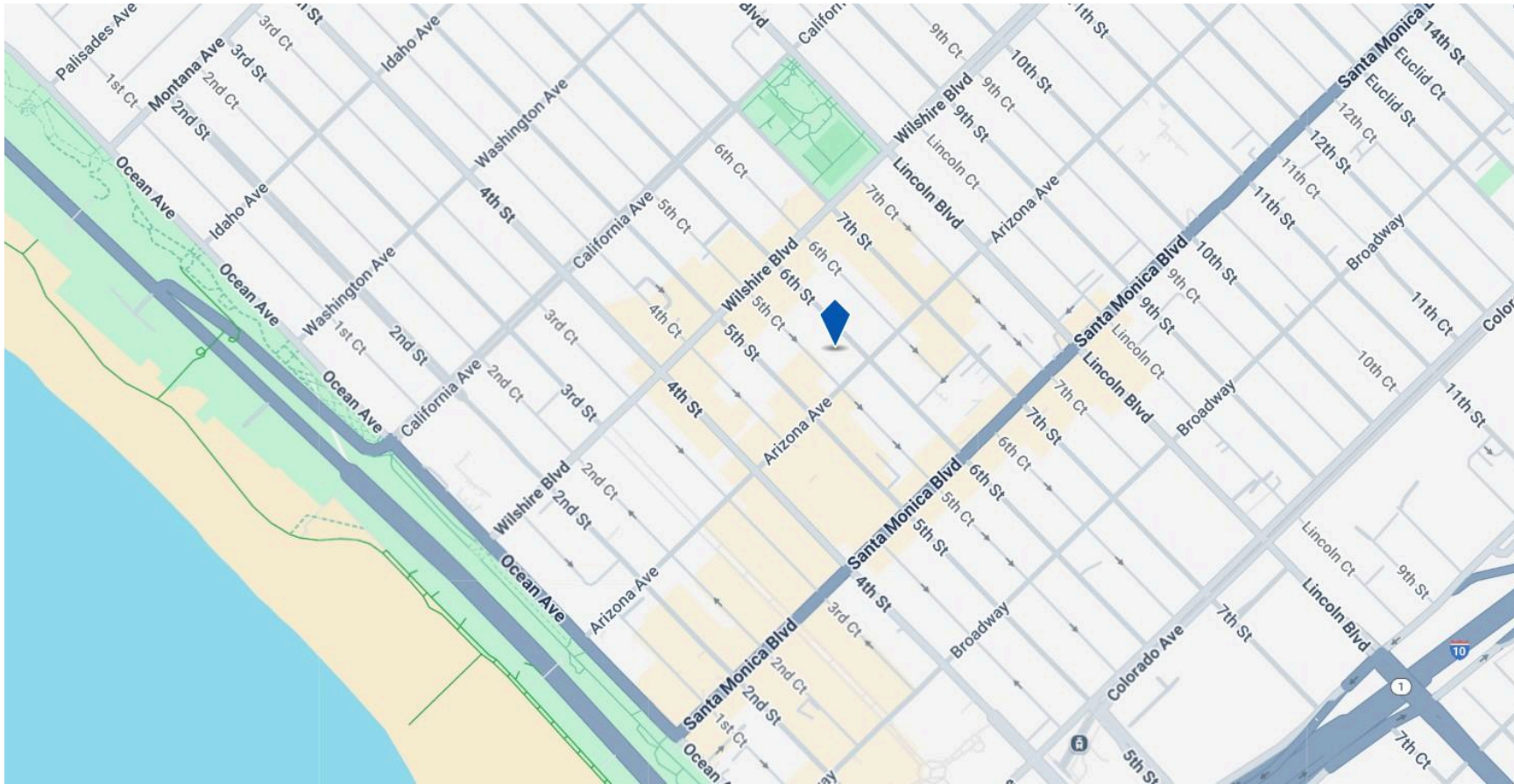
Prime Santa Monica location with many restaurants and eateries within close proximity including: Bay Cities, Sweetfin Poke, Pono Burger, Crimson, Tu Madre Fritto Misto, Tar and Roses, Marmalade, and much more.



Photos



Map View



1513 6th Street, Suite 201 A • Santa Monica, CA 90401 • (310) 458-4100 • FAX (310) 458-4100 www.muselli.net

DRE BROKER # 00825237

All information furnished is from sources deemed reliable and which we believe to be correct, but representation or guarantee is given as to its accuracy and is subject to errors and omissions. All measurements are approximate and have not been verified by the Broker. You are advised to conduct an independent investigation to verify all information.