

Pico Robertson Office Space for Lease



1147 S Robertson Blvd Los Angeles CA 90035



Laura Pozarny, Executive Vice-President
(310) 458-4100 ext: 222
lpozarny@muselli.net
DRE License 02129230

Evan Pozarny, Executive Vice-President
310-458-4100 ext: 221
epozarny@muselli.net
DRE License 01304769

1147 S Robertson Boulevard Los Angeles CA 90035

Positioned in the heart of the highly desirable Pico-Robertson neighborhood, 1147 S Robertson Blvd offers a professional and accessible office environment ideal for a variety of users. This well-located property benefits from strong visibility along Robertson Boulevard, with convenient access to major Westside thoroughfares including Pico Boulevard, Beverly Boulevard, and the I-10 freeway. Surrounded by a diverse mix of dining, retail, and service amenities, the property offers excellent walkability and day-to-day convenience. Its central location places it just minutes from Beverly Hills, Century City, and Culver City, making it an ideal hub for businesses seeking a prestigious yet practical West Los Angeles address.

Highlights

- Reception area
- Interior open space
- Kitchenette
- 1 windowed office with separate entrance
- 3 additional windowed offices
- Bright space with a lot of natural light Boutique building with courtyard
- Ample storage
- Shared men's and women's restrooms
- **Motivated Landlord**

Lease Rate

- \$2.75/SF Modified Gross

Parking

- 2 Parking Spaces in rear at \$100/month per space

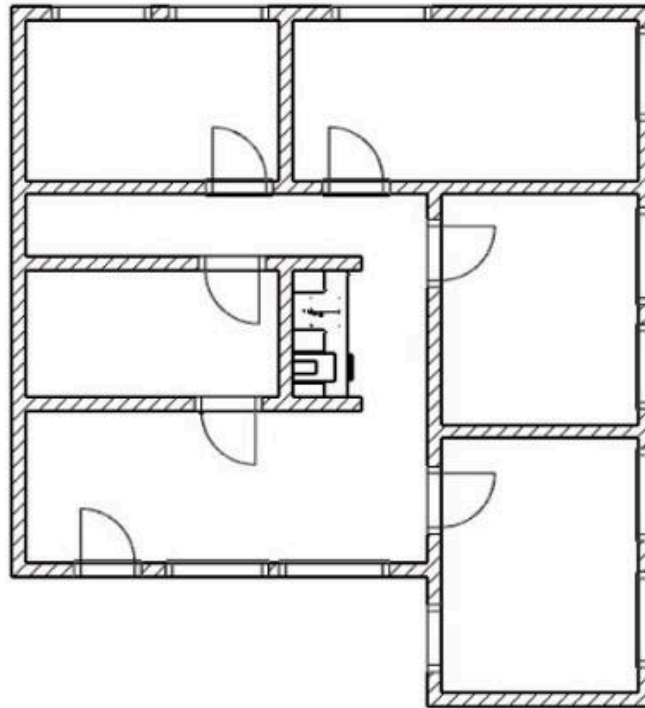
Area

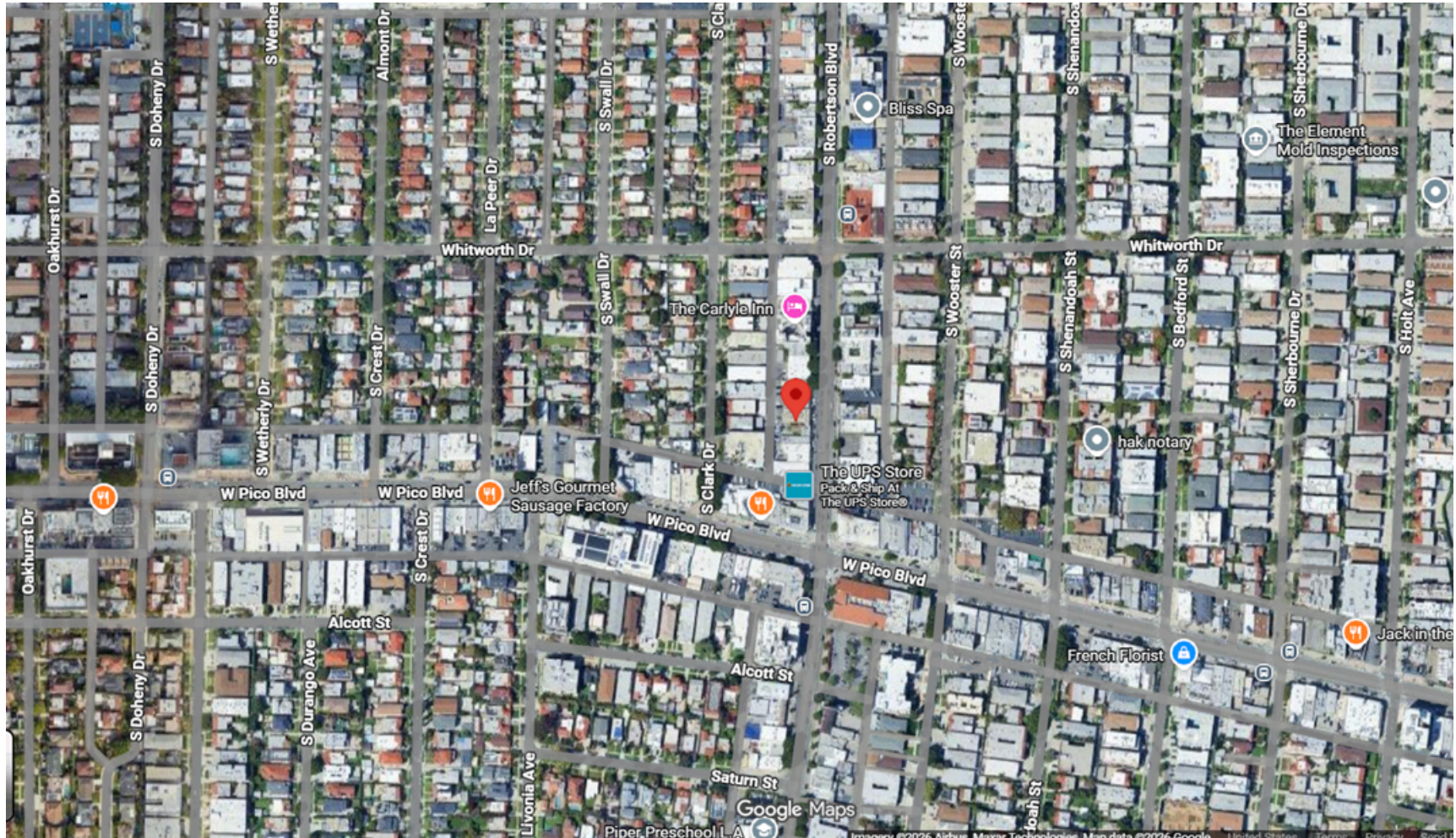
- Prime Pico-Robertson location just North of Pico Blvd
- Close to the 10 FWY and Beverly Hills
- Nearby Tenants include Le Petit Jardin, A Food Affair, Si Laa Thai Dining, The Carlyle Inn, The UPS Store, and OsteoStrong





SUITE 203 FLOOR PLAN





1513 6th Street, Suite 201 A • Santa Monica, CA 90401 • (310) 458-4100 • FAX (310) 458-4100
www.muselli.net DRE BROKER # 00825237

All information furnished is from sources deemed reliable and which we believe to be correct, but no representation or guarantee is given as to its accuracy, and is subject to errors and omissions. All measurements are approximate and have not been verified by the Broker. You are advised to conduct an independent investigation to verify all information and check with the local zoning authority to verify that your intended use is allowed.